



Snowy Valleys Our Connected Communities Roadmap

Social connectors in our local places

August 2022

Acknowledgment of Country

We acknowledge the traditional custodians of this land and pay respects to Elders past and present.

We recognise Aboriginal people as the original custodians of the lands that comprise the Snowy Valleys Council area and pay our respects to the leaders of the traditional custodians of this land.

Together we acknowledge the contributions of Aboriginal Australians to this country we all live in and share together.

Snowy Valleys Council is committed to enhancing the knowledge and understanding of our communities about the history, heritage and cultures of Aboriginal Australians.



Report title: Snowy Valleys Our Connected Communities Roadmap - Social Connectors in our Local Places

Client: Snowy Valleys Council

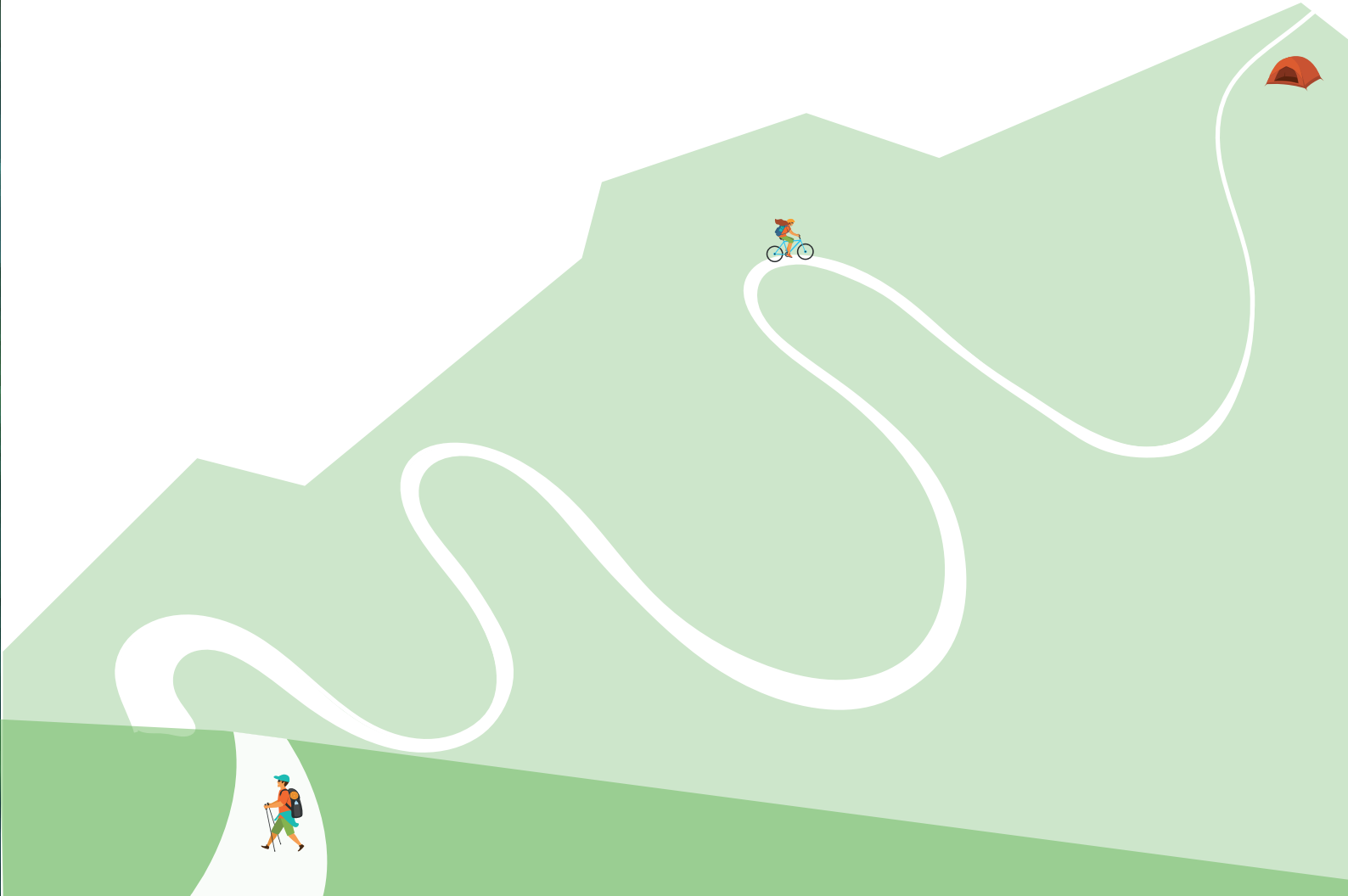
Version: Final

Date: August 2022

This material is made available by Cred Consulting on the understanding that users exercise their own skill and care with respect to its use. Any representation, statement, opinion or advice expressed or implied in this publication is made in good faith. Cred Consulting is not liable to any person or entity taking or not taking action in respect of any representation, statement, opinion or advice referred to in this document.

Table of contents

What’s in this report?	4
How connected are we?	5
Social connectors maps	
Tumbarumba	6
Adelong	8
Batlow	10
Jingellic	12
Rosewood	14
Khancoban	16
Tumut	18



What's in this report?

Each of the seven localities in the Snowy Valley's has its own individual Connected Community Roadmap. These Roadmaps identify the community-led vision, aspirations and ideas to build more socially connected and cohesive local communities.

This report provides a snapshot of the seven *Our Connected Communities Roadmaps* for each of these localities, presenting a map of community assets and social connectors available in each locality. The community assets mapped include special:

- **Community groups & events** - groups led by volunteers and events in our community
- **Services & institutions** - services funded by Council and other government agencies
- **Places & spaces** - the parks, sport spaces, community buildings, cafés, pubs and other places where we meet, attend programs and connect formally and informally
- **Information sources** - the local papers, newsletters and community noticeboards where we receive and share local information

It provides a summary of our social connectors across the Snowy Valleys Local Government Area and presents some overarching ideas and directions of what council can do across all of its localities.



How connected are we?

Community groups and events

Across our places, we have a strong volunteer base that coordinate sporting, creative arts and community groups. These groups bond our community to each other, but depend on new members, funding and training support to keep these functioning. These are our closest points of contact and bridge strong networks of trust. We have loved and well attended community events, helping to activate our centres and support our local economies.

Services & institutions

Most of our services and institutions are located in our two main centres - Tumut and Tumbarumba. Batlow is reasonably well serviced with close access to Tumut, whereas people in Khancoban, Rosewood, Adelong and Jingellic need to travel to Tumut, Tumbarumba or outside our LGA to access Council and other government services. This impacts our ability to link to networks we need, especially in the case of an emergency.

Information sources

Our local communities depend on local newsletters, papers, notice boards, and Council communications to know what's going on in our areas including community programs and events. This is particularly important during an emergency, with many areas of the LGA having no or patchy access to internet. Those communities living outside of centres are particularly impacted, including around Khancoban, Rosewood, Adelong and Jingellic and older residents living on the outskirts of Tumbarumba.

Places & spaces

All our localities have cafes and meeting places to connect. We can access our Council community pools for free, as well as local sporting, camping and natural areas. There are RFS safe places in all centres. Tumut, Tumbarumba and Batlow are the most well serviced localities with libraries, Council offices, NGOs, multi-service outlets, community halls and sports venues. A challenge we face is that many of the cafes and informal places to connect are closed on weekends or evenings, impacting our community's ability to bond socially, or for visitors to stop, stay and activate our local places. Batlow, in particular, has a desire for it's local places to be better functioning spaces that are open longer hours to bring people into town.

Five actions Council can take

1. Support the communities in each locality to implement their Connected Community Roadmap.
2. Consider the delivery of pop-up Council services throughout the year in each of the localities where Council does not have offices. This would provide with the opportunity to meet with Council staff on a range of planning, public space and services matters, without having to travel to Tumut or Tumbarumba.
3. Provide ongoing grant information and writing support to community groups and small businesses to build their capacity to access funding for community building projects.
4. Identify and promote an "Information hub" in each locality where people can access information during emergencies. This could be the local chemist, post office or library.
5. Further promote through newsletters and social media, local community groups, programs and events that can socially connect the community to encourage social cohesion.

Our social connectors in Tumbarumba

Social cohesion is a broad concept that includes the idea of social capital. Social capital refers to the many benefits that arise from having strong social connections and networks within communities.

Social capital has three elements that are important to have within a socially cohesive society:

- 1

BONDING SOCIAL CAPITAL

“**Bonding**” social capital characterises social groups where people share many experiences and values associated with their ethnicity, religion or locality and other interests.

Tumbarumba is a connected community who meet up in local cafes, pubs and parks and care for each other.
- 2

BRIDGING SOCIAL CAPITAL

“**Bridging**” social capital focuses on extending interaction between different social groups, which draws people into many different opportunities for pursuing and achieving their aspirations and meeting their needs.

In Tumbarumba there is high volunteering through Rotary, the Men’s Shed, the Museum and events, and Council community services centre.
- 3

LINKING SOCIAL CAPITAL

“**Linking**” social capital connects groups to institutions and organisations that open up opportunities and resolve problems that might otherwise be missed.

Council’s offices are located here and can link and connect local community members and services to work in partnership. Council also funds and directly operates the multi-service centre that provides community transport, home and community care and other services particularly for older residents.

WALK SCORE

Walk Score of 58 tells us that near the centre people can access places and spaces on foot, but for many in the Tumbarumba area, they will be dependent on a car, which is a barrier for older people who are transport disadvantaged.

- #### COMMUNITY GROUPS AND EVENTS

 - Tumba Fest (event and organising committee)
 - Tumbarumba Campdraft (event and organising committee)
 - Tumbarumba Chamber of Commerce
 - Rotary Breakfast Club
 - Tumbarumba Men’s Shed
 - Tumbarumba Rotary Club
 - Tumbarumba to Rosewood Rail Trails Group
 - Early Childcare Group
 - Tumbarumba Vigneron
 - Cycle Tumbarumba
 - Pioneer Hut Women’s Museum
 - Tumbarumba Visitors Centre Volunteers
- #### SERVICES AND INSTITUTIONS

 - Australia Post Tumbarumba
 - Tumboosh
 - Snowy Valleys Council
 - Tumbarumba Police Station
 - Tumbarumba Fire Station
 - Tumbarumba Multi-Service Outlet and Museum
 - Mountain Landcare
 - Tumbarumba and Khancoban Community Transport
- #### PLACES AND SPACES

 - Shops, pubs and cafes along The Parade
 - Tumbarumba Library
 - RSL Memorial Hall
 - Tumbarumba RSL
 - Artists on Parade
 - Nest Café & Cinema
 - Forage
 - Tumbarumba Showgrounds
 - Ladbroken Distilling Co.
 - The Tumbarumba to Rosewood Rail Trail
 - Tumbarumba Swimming Pool
 - Tumbarumba Caravan Park
 - Henry Angel Trackhead
 - Hume and Hovell Track
 - Tumbarumba Mountain Bike Park
 - Paddy’s River Falls
 - Mannus Lake
 - Tumba Bikes and Blooms
- #### INFORMATION SOURCES

 - Tumbarumba Times
 - 3 Community Noticeboards (Main Street (kiosk), Library, Near Bakery (private))



Our social connectors in Adelong

1 BONDING SOCIAL CAPITAL
“**Bonding**” social capital characterises social groups where people share many experiences and values associated with their ethnicity, religion or locality and other interests.

Adelong is a close knit community with a range of local services and facilities to connect including schools, pool, shops, post office, Men’s Shed and the Bowling Club.

2 BRIDGING SOCIAL CAPITAL
“**Bridging**” social capital focuses on extending interaction between different social groups, which draw people into many different opportunities for pursuing and achieving their aspirations and meeting their needs.

Adelong is a small close-knit community with high volunteering. Many young people move on from the town which puts pressure on the long time older volunteers to continue the services they provide the community. Adelong has less opportunities to bridge connections from outside the area. There is limited infrastructure for visitors to encourage them stay.

3 LINKING SOCIAL CAPITAL
“**Linking**” social capital connects groups to institutions and organisations that open up opportunities and resolve problems that might otherwise be missed.

Adelong does not have local, state or Federal services and residents have to travel to Wagga Wagga.

**WALK SCORE**
Adelong with a Walk Score of 45 with some access to community assets and services on foot but most services need to be accessed by car.

- COMMUNITY GROUPS & AND EVENTS**
- Adelong Progress Association
 - Adelong Show Society
 - Adelong Historical Society
 - Adelong Men’s Shed Inc – Tumut

- SERVICES & INSTITUTIONS**
- Adelong RFS
 - Adelong Police Station
 - Adelong Post Office
 - Adelong Medical Centre

- PLACES & SPACES**
- Adelong Street shops and cafes.
 - Adelong Library
 - Adelong Services and Citizens Bowling Club
 - Adelong Showgrounds
 - Apex Park
 - Adelong Men’s Shed
 - Adelong Alive Museum
 - Adelong Community Aquatic Centre
 - Adelong Preschool
 - Adelong Public School
 - St Josephs Primary School
 - St Paul’s Anglican Church
 - Darlo NSW RFS Shed (Safe place)
 - Wondalga RFS Shed (Safe place)

- INFORMATION SOURCES**
- Tumut and Adelong Times
 - 2 Community Noticeboards (Community Centre, General Store (SPAR))



Our social connectors in Batlow

1 BONDING SOCIAL CAPITAL
“**Bonding**” social capital characterises social groups where people share many experiences and values associated with their ethnicity, religion or locality and other interests.

There are a lot of community groups in Batlow to share experiences. While there are many shopfronts, they are mostly closed particularly on weekends making it hard for locals to catch up, socialise and bond. There is a desire in the community to activate the main streets for this purpose.

2 BRIDGING SOCIAL CAPITAL
“**Bridging**” social capital focuses on extending interaction between different social groups, which draw people into many different opportunities for pursuing and achieving their aspirations and meeting their needs.

With some major services here such as the hospital and school, people come into Batlow to work or access the services and this provides bridges to other communities. The closure of shops particularly on weekends means visitors don’t come to Batlow and activate the area.

3 LINKING SOCIAL CAPITAL
“**Linking**” social capital connects groups to institutions and organisations that open up opportunities and resolve problems that might otherwise be missed.

Batlow has a number of government services to link and resolve problems including the Resilience Hub, the Hospital and the Council library which is a point of connection. However, residents need to travel to Tumut to access Council customer services and other Federal services such as Medicare and Centrelink. The community indicated a desire for the rail trail to link Batlow to Tumbarumba.

WALK SCORE
Batlow has a Walk Score of 47 which indicates that many residents have to travel by car to access services and run errands, this is despite having a mainstreet with many shopfronts.

COMMUNITY GROUPS & EVENTS

- Batlow Apple Blossom Festival
- Batlow Cider Fest
- Interact Club Batlow
- Enterprising Batlow Inc.
- Batlow Men’s and Hen’s Shed
- Batlow CWA
- Batlow Apple Growers
- Do it for Batlow
- Baptist Care Social Club
- Batlow Historical Society
- Batlow Table Tennis Group

SERVICES & INSTITUTIONS

- Sureway Employment and Training Batlow
- Batlow Rural Fire Service
- The Resilience Hub
- Batlow-Adelong Multipurpose Service
- Batlow Community Transport
- NSW Ambulance
- Batlow IGA

PLACES & SPACES

- | | |
|----------------------------------|-------------------------------------|
| • Pioneer Street shops and cafes | • Batlow Technology School |
| • Batlow Library | • St Mary’s Catholic Primary School |
| • Batlow Showground | • Batlow Police Station |
| • Batlow Hotel | • Batlow Caravan Park |
| • Batlow RSL Club | • Wilgro Orchard/Cider Thief |
| • Batlow Resilience Hub | • Batlow Bakery |
| • Literary Institute of Batlow | • Pippins of Batlow |
| • Memorial Park (RFS Safe Space) | • Coffee and More |
| • Batlow Community Swimming Pool | |
| • Yaven Creek NSW RFS Shed | |
| • Batlow Golf Course | |
| • Batlow Hospital | |
| • Batlow Bowling Club | |

INFORMATION SOURCES

- Batlow and Beyond Bulletin
- 2 Community Noticeboards (Library, IGA)



Our social connectors in Jingellic

1

BONDING SOCIAL CAPITAL
“**Bonding**” social capital characterises social groups where people share many experiences and values associated with their ethnicity, religion or locality and other interests.

The local community meets at the Jingellic Pub and General Store to socially connect and catchup. The Showgrounds hosts a number of events that bring people together and the Jingellic Hub Inc is run by local volunteers.

2

BRIDGING SOCIAL CAPITAL
“**Bridging**” social capital focuses on extending interaction between different social groups, which draw people into many different opportunities for pursuing and achieving their aspirations and meeting their needs.

Jingellic has limited built social connectors to bring people from outside into the area. However, the Murray River attracts people with water recreation, who may stay at the pub, Honeysuckle Cottage or the free campground.

3

LINKING SOCIAL CAPITAL
“**Linking**” social capital connects groups to institutions and organisations that open up opportunities and resolve problems that might otherwise be missed.

Residents of Jingellic have to travel 43 km to Tumbarumba or 109km to Tumut to access Council, State and Federal services. There are none locally, and there may be a need for mobile services to visit the area.



WALK SCORE
Jingellic has a very low Walk Score of 10, indicating that people need to travel by car to access community assets.

- COMMUNITY GROUPS & EVENTS**
 - Jamming at Jingellic (event)
 - Tooma Gymkhana
 - Tooma Market
- SERVICES & INSTITUTIONS**
 - Australia Post Tooma
 - Jingellic Hub Inc.
- PLACES & SPACES**
 - Jingellic General Store
 - Jingellic Pub
 - Tooma Inn.
 - Brigham House BnB
 - Jingellic Reserve (RFS Safe Place)?
 - Tooma Sportsground Oval (RFS Safe Place) (this will be outside the centre – perhaps)
 - Jingellic Showgrounds
 - Flamin’ Hell Sculpture
 - Honeysuckle Cottage
- INFORMATION SOURCES**
 - Jingellic Hub Inc. Newsletter
 - 1 Community Noticeboard (Inside General Store)



Our social connectors in Rosewood

1 BONDING SOCIAL CAPITAL
“**Bonding**” social capital characterises social groups where people share many experiences and values associated with their ethnicity, religion or locality and other interests.

Rosewood is a friendly welcoming close knit community who meets up at the Rosewood Cafe and General Store, with the Golf Club being the main place the community gets together. The Rosewood Public School, while small, is a place for families and children to bond in town. There is no Council community hall in the area.

2 BRIDGING SOCIAL CAPITAL
“**Bridging**” social capital focuses on extending interaction between different social groups, which draw people into many different opportunities for pursuing and achieving their aspirations and meeting their needs.

The Rail Trail brings people from outside the area into Rosewood, but is also used by people to access other nearby areas. Gone Barney Cafe is the start to the Rail Trail and where visitors from outside the area come to town, while locals also access information from its Community Noticeboard. Many young people move on from the town which puts pressure on the long time older volunteers. Local events like the Country Music Festival bring visitors to town.

3 LINKING SOCIAL CAPITAL
“**Linking**” social capital connects groups to institutions and organisations that open up opportunities and resolve problems that might otherwise be missed.

There are no linking services in Rosewood. Residents have to travel 20km km to Tumbarumba and 70km to Tumut to access local, State or Federal services. Some residents have started to use the Rail Trail to access services in Tumbarumba.

WALK SCORE
Rosewood has a very low Walk Score of 13, indicating that people need to travel by car to access community assets.

- COMMUNITY GROUPS & EVENTS**
- Rosewood Men’s Shed
 - Rosewood Country Music Festival

- SERVICES & INSTITUTIONS**
- Rosewood RFS Station
 - Rosewood Post Office

- PLACES & SPACES**
- Memorial Park
 - Rosewood Men’s Shed
 - Rosewood Rail Trail
 - Rosewood Public School
 - Gone Barney Café and Nursery
 - Rosewood Golf Club
 - Rosewood Public School
 - Rosewood to Tumbarumba Rail Trail
 - Rosewood General Store

- INFORMATION SOURCES**
- 1 Community Noticeboard (Gone Barney)



Our social connectors in Khancoban

1 BONDING SOCIAL CAPITAL
“**Bonding**” social capital characterises social groups where people share many experiences and values associated with their ethnicity, religion or locality and other interests.

KUVA is the community heart, operating out of a Snow Hydro space in town. However, the volunteers who drive KUVA are ready to pass on to other leaders in the community. They run the op shop and bring people together.

However, the preschool is run by locals building strong local bonds, and the Pickled Parrot Providore is where people meet and catchup. The community hall and other spaces have been closed making it difficult for the community to meet and participate in community programs.

2 BRIDGING SOCIAL CAPITAL
“**Bridging**” social capital focuses on extending interaction between different social groups, which draw people into many different opportunities for pursuing and achieving their aspirations and meeting their needs.

Khancoban is disconnected geographically, and the community have aspirations to encourage visitors into the town to stay, but need improved community space and accommodations.

3 LINKING SOCIAL CAPITAL
“**Linking**” social capital connects groups to institutions and organisations that open up opportunities and resolve problems that might otherwise be missed.

There are no linking services in Khancoban and residents have to travel 76km to Tumbarumba for some Council services or more than 143km to Tumut to meet with Council officers. There is a desire for mobile services and institutions to come to Khancoban to improve social outcomes.

**WALK SCORE**
Khancoban is a compact centre, but with a Walk Score of 9, most people need to drive to access services which particularly impacts transport disadvantaged residents including children, young people and seniors.

- COMMUNITY GROUPS & EVENTS**
 - Khancoban Uniting Volunteers Association Inc. (KUVA)
- SERVICES & INSTITUTIONS**
 - Khancoban Visitor Centre
- PLACES & SPACES**
 - Khancoban Community Hall
 - Khancoban Country Club
 - Khancoban Skate Park
 - Khancoban Lakeside Caravan Park
 - Khancoban Dam
 - Khancoban Caravan Park
 - Corryong Bakery
 - Khancoban Preschool
 - Khancoban Public School
 - Khancoban Community Hall
 - Tennis courts
 - Pickled Parrot Providore (local café)
 - Catholic Church
 - Snowy Hydro
 - Khancoban Swimming Pool
- INFORMATION SOURCES**
 - Jottings Khancoban Monthly Newsletter
 - 1 Community Noticeboard (Outside KUVA Office)



Our social connectors in Tumut

1 BONDING SOCIAL CAPITAL
“**Bonding**” social capital characterises social groups where people share many experiences and values associated with their ethnicity, religion or locality and other interests.

Tumut is a vibrant town with lots of places to meet, walk the dog, play with kids, play sport, and meet up at the cafes, pubs, the free pool, breweries and theatre. Coo-ee Cottage is a central bonding space for the Indigenous community. There are many recreational spaces to bond including skate park, river, and sports facilities.

2 BRIDGING SOCIAL CAPITAL
“**Bridging**” social capital focuses on extending interaction between different social groups, which draw people into many different opportunities for pursuing and achieving their aspirations and meeting their needs.

The area has many visitors and many seasonal workers bring a diverse range of people to town. People visit on the way to Canberra and the Snowy Mountains and there is accommodation for people to stay here. The area has educational facilities such libraries, schools and the TAFE which draws young people to the area.

3 LINKING SOCIAL CAPITAL
“**Linking**” social capital connects groups to institutions and organisations that open up opportunities and resolve problems that might otherwise be missed.

As the main service centre for the Snowy Valleys LGA, the area has the linking institutions residents need to access all services. Social services are delivered externally by Valmar.

**WALK SCORE**

Tumut has a high Walk Score of 72 which means that people can access community asset including services easily in town and close to home

- COMMUNITY GROUPS
 - Tumut Show
 - (sports associations)
 - Tumut Basketball Association
 - Women’s Group
 - Brungle and Tumut Indigenous Group
 - Gilmore Progress Association
 - Talbingo Community Association
 - Talbingo Mountain Biking Group
 - Tumut Classic Bike event
 - Tumut Equestrian Group
 - Tumut Art Society
 - Tumut Bushwalking, Canoe Club, Mountain Bike Clubs
 - Tumut Historical Society
- SERVICES
 - Valmar Support Services
 - Tumut and District Neighbourhood Centre
 - Cooee Cottage
 - Snowy Valleys Council
 - NSW Rural Fire Service
 - Tumut Regional Family Services
 - Brungle – Tumut Aboriginal Land Council
 - IDEAS
 - Australia Post
 - Tumut Police Station
- PLACES AND SPACES
 - Wynyard Street cafes, shops
 - Tumut Library
 - Tumut Showgrounds
 - Cooee Cottage
 - Montreal Community Theatre
 - Tumut Basketball Stadium
 - Tumut Caravan Park
 - Tumut Mountain Bike Park
 - Tumut Turf Club
 - Tumut Visitor Centre
 - Tumut Swimming Pool
 - Tumut Skate Park
 - Lacmalac Hall (RFS Safe Space)
 - Tumut Sportsgrounds (RFS Safe Space)
 - Tumut Bowls Club
 - Brungle Primary School
 - Tumut Public School
 - Tumut High School
 - Franklin Public School Tumut
 - Tumut River
 - Rotary Gardens
 - Breweries (like Tumut River Brewing Company)
 - Tumut TAFE
- INFORMATION
 - Tumut and Adelong Times
 - Sounds of the Mountain, Tumut 94.3 Radio
 - 2 Community Noticeboards (Library & Main Street near Pie in the Sky bakery)



