

An isometric illustration of a community map. The map features a grid of orange streets. A blue river flows through the upper right. Various landmarks are depicted: a police station, a post office, a fire station with a red fire truck, a school with a playground and a swimming pool, a library, and several houses. People are shown engaged in various activities: walking a dog, playing in a park, swimming, and reading. A newspaper labeled 'NEWS' is shown in the bottom right corner.

Our connected community roadmap

Adelong & Surrounds

Acknowledgement of Country

We acknowledge the traditional custodians of this land and pay respects to Elders past and present.

We recognise Aboriginal people as the original custodians of the lands that comprise the Snowy Valleys Council area and pay our respects to the leaders of the traditional custodians of this land.

Together we acknowledge the contributions of Aboriginal Australians to this country we all live in and share together.

Snowy Valleys Council is committed to enhancing the knowledge and understanding of our communities about the history, heritage and cultures of Aboriginal Australians.



Report title: Adelong and Surrounds - Our Connected Communities Roadmap

Client: Snowy Valleys Council

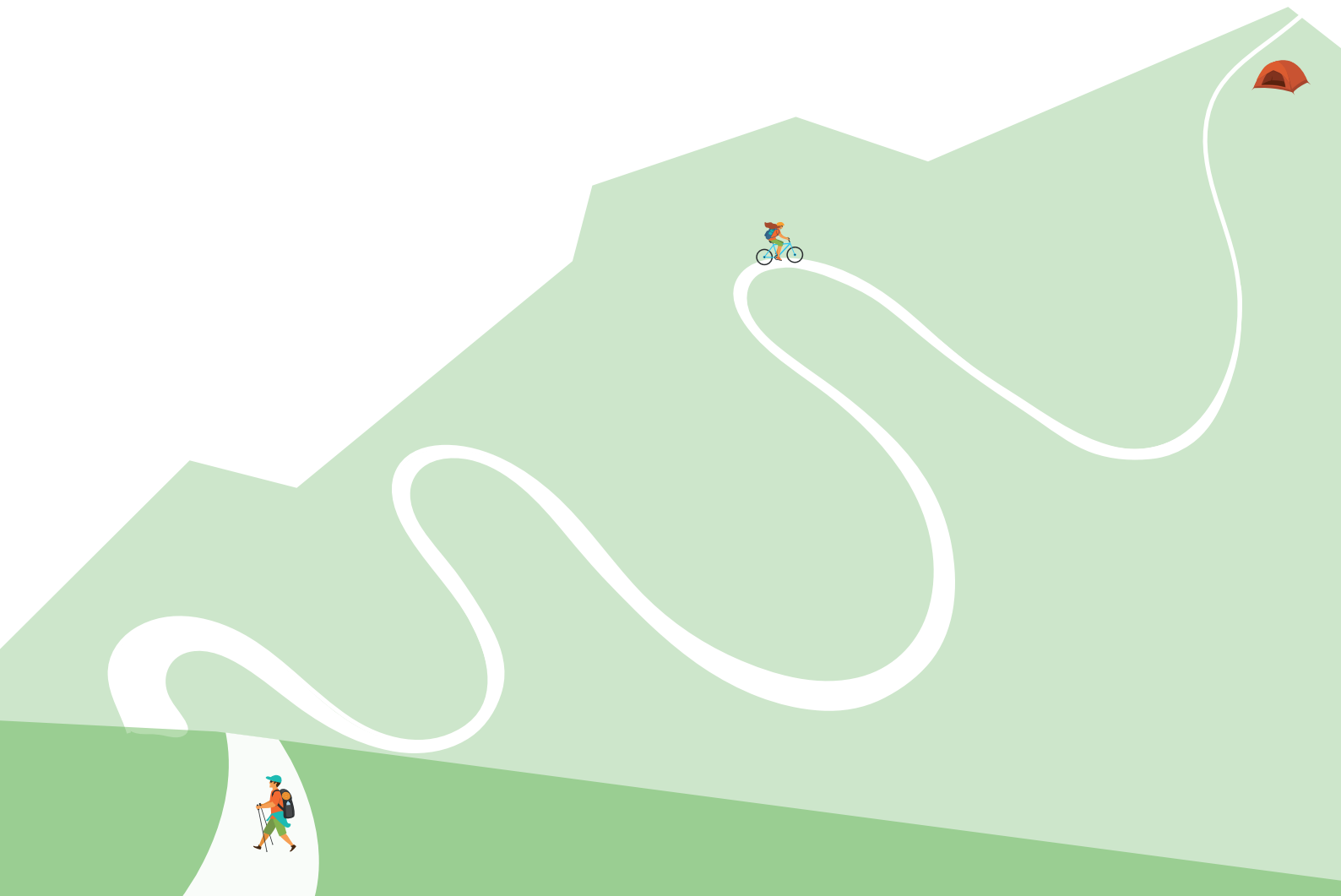
Version: Final

Date: October 2022

This material is made available by Cred Consulting on the understanding that users exercise their own skill and care with respect to its use. Any representation, statement, opinion or advice expressed or implied in this publication is made in good faith. Cred Consulting is not liable to any person or entity taking or not taking action in respect of any representation, statement, opinion or advice referred to in this document.

Table of contents

1. Introduction	4
2. Our Community	7
3. Our Vision and Values	10
4. Mapping our Community Assets	12
5. Our Roadmap	16



1. Introduction

Background

The past few years have been difficult for our community, with the impacts of the 2019-2020 Black Summer Bushfires and COVID-19 lockdowns.

Snowy Valleys Council (Council), through partial funding from the NSW Community Recovery and Resilience Fund, has been working with our local community to prepare community-led plans aimed at understanding our places, spaces and networks that connect us to build stronger more socially cohesive and resilient communities.

Research from Resilient NSW and NCOSS tells us that for communities to be resilient in the face of emergencies, they need to be connected with each other, their places, and local services and institutions. Knowing our neighbours, having good relationships with friends and family, and being part of a connected community means someone will notice if we're missing, help if we are in trouble and get us back on our feet after the crisis has passed.

Building stronger communities

Resilience NSW has identified a number of ways that we can build stronger communities and be prepared for emergencies, respond as a community, and recover together. This includes:

- Understanding our local community including the people and place context - including our history, values and aspirations
- Recognising the complexity of different and unique places, because successful recovery is responsive to the complex and dynamic nature of both emergencies and a community
- Using community-led approaches - being community centred, responsive and flexible, and engaging with communities to move forward
- Coordinating activities - successful recovery requires a planned, coordinated and adaptive approach between community and partner agencies and requires a range of social connectors, and community assets, for this to occur effectively
- Recognising and building capacity - successful recovery is built on effective communication, networking and partnership between communities, services, and government agencies/institutions.

The importance of planning for social cohesion

The Scanlon Foundation (2021) defines social cohesion as being concerned with: "the extent of shared values, mutual respect and acceptance of difference, as well as trust between people and trust in institutions".

Social cohesion is about having strong bonds between individuals and institutions within a society, resulting in positive quality of relationships that are rooted in equal and just treatment, respect and care for one another. Social cohesion is an important foundation for cooperation towards shared outcomes.

Research shows that connected communities, with strong networks, trust, social spaces to connect, and bonds recover more quickly from adversity like the ones we've recently experienced in Adelong and Surrounds.

The Resilient Cities Network's "Measuring Social Cohesion Guide" notes that:

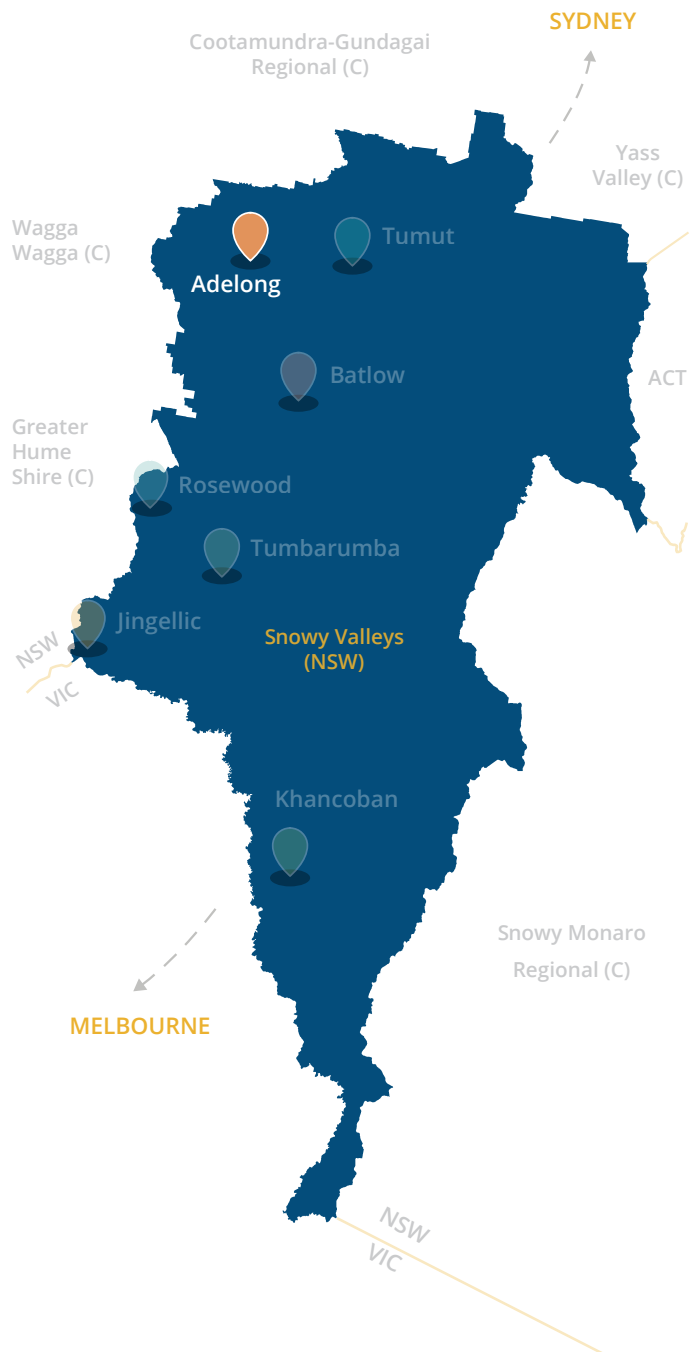
"Higher levels of social cohesion and positive social interactions serve to strengthen the overall fabric of the city, allowing communities to bounce back faster and rebuilt more efficiently after experiencing major shocks and stresses"

Our plan for a connected place

This *Our Connected Communities Roadmap for Adelong and Surrounds* is a community-led plan to build a socially connected, resilient place supported by the community assets needed to plan for, respond to and recover from emergencies. Adelong and Surrounds includes the localities of Adelong, Ellerslie, Grahamstown and Gadara.

The Roadmap sets a vision and values as identified by our local community to strengthen community connections and our resilience, and identifies ideas and actions to improve access to the community assets we need to better withstand future challenges and emergency events. It provides our resident and business community, Council and other institutions with the information needed to work in partnership with us.

It acknowledges that our social connectors: the community groups and events; services and institutions; places and spaces; and information sources - play a central role in how socially cohesive we are and focuses on identifying community-led initiatives and priorities for the improvement of our place and community.



Our Community Road Map Locations

What's in this Roadmap?

This Roadmap includes:

- Our community demographic and place profile
- Our community's vision and values
- What we love and what we'd change about our place
- A map of our community assets, or "social connectors" which bring our community together
- Assessment of our social connectors, our social capital, and identification of strengths and challenges
- Our ideas for how to make our place stronger and more socially connected, and
- An Action Plan for how our community and other institutions can work together to build a strong, socially connected and resilient place.

“ Adelong came to life more over the past six years, as there is fresh blood moving in with young families.”

- Community member

How was this Roadmap developed?

This Roadmap was developed in partnership with the **Adelong and Surrounds** community and Snowy Valleys Council acknowledging that the creation of strong socially cohesive communities must be community-led. Our local people and community groups and services have a critical role to play in community building, emergency preparedness and recovery. Engagement with the community included:

- Love Letters to Local Places postcards
- Places we Connect Boards, built by the Batlow Men's Shed
- Pop-up stalls in main streets
- Community meet ups in local community spaces
- Interviews with service providers, businesses, Council, and community groups, and
- Submissions via Council's Have My Say Page.

How can we use this Roadmap?

How can Council use this Roadmap?

Council can use this Roadmap for forward planning and resource allocation for infrastructure, strategic city planning and social development activities within the annual Operational Plan process.

How can Councillors use this Roadmap?

Councillors can use this Roadmap for advocacy, lobbying and promotion of community successes and challenges to government agencies, industry and all levels of government for funding support or program delivery.

How can community members and groups use this Roadmap?

Community members and groups can use this Roadmap for galvanising community group and volunteer action around identified activities for improvement of social cohesion and sourcing grant funding.



2. Our community

Our place

Adelong and surrounds includes the localities of Adelong, Ellerslie, Grahamstown and Gadara, with Adelong being the main centre of our place. Our town is located on the traditional lands of the Wiradjuri People.

Adelong is a beautiful town in the north-west of the Snowy Valleys LGA, located 21km west of Tumut and around 450km from Sydney and Melbourne. Our main street is classified by the National Heritage Trust of Australia (NSW), with some buildings dating back to the gold rush. We have wide tree-lined streets, a fascinating heritage gold mining precinct, and the sparkling Adelong Creek provides a peaceful background to this charming place.

Adelong is surrounded by creeks and smaller localities like Ellerslie, Grahamstown and Gadara.

Our place is becoming more vibrant as younger families move into the area and we continue to grow our community spirit through local events and volunteering opportunities, including at the Adelong Alive Museum and Men's Shed.

We are a welcoming place and enjoy sharing heritage elements of our town at the volunteer-run Adelong Alive Museum. Our community volunteer to keep our town tidy and protect the natural surrounds for our future generations.

The community assets and those social connectors that make our place special are detailed in Section 4, Mapping our Community Assets.

"I love all the volunteering and community spirit in this town."



Good employment

Recognising local employment opportunities like the Snowy Hydro as a major strength for our community.



The country-feel

Feeling really lucky to be in a place that offers peace and quiet and the safety and friendliness of a small town.



Connected to nature

Experiencing the beauty and serenity of the natural surrounds, particularly the falls and the creek.





Our people

In 2021, there were approximately 1,092 people living in Adelong and Surrounds.

People of all ages live in Adelong and Surrounds.

While our median age is 46, which is higher than the Regional NSW average, we have a similar proportion of people aged under 18 (22%), 18 to 64 (52%) and over the age of 65 (22%) compared to our LGA and Regional NSW.

Our community spirit and location means that we are more advantaged than other localities.

Although we may earn approximately \$100 less per week than if we lived in other places in the Snowy Valleys, our SEIFA score is higher meaning that we have greater access to services and are more advantaged than other places in our LGA.

Our people come from all walks of life.

Our town is located on the traditional lands of the Wiradjuri People and almost 4% of our residents are First Nations. We also have more people that speak a language other than English at home (8.2%), compared to Snowy Valleys (3.5%) and Regional NSW (5.7%), because of our itinerant workforce. Languages spoken include Afrikaans, Italian, Filipino, German and Cantonese.

We are more likely to own our homes and have good access to the internet.

Two in three people are homeowners in Adelong and Surrounds, which is almost double than the average of our LGA, and therefore less people rent



in Adelong. While the majority of our households are family households (56%), this is lower compared to Snowy Valleys (62%) and Regional NSW (63%).

We have good internet access compared to the average across our LGA, with three in four residents connected to the internet.

Table 1 - Our people and household characteristics
(Based on 2021 ABS Census for the areas of Adelong, Ellerslie, Graham and Gadara)

Total population	Adelong & Surrounds	Snowy Valley Council	Regional NSW
	1,092	14,395	-
Median age	46	45	43
Median household income	\$1,018	\$1,122	\$1,166
Under 18	22%	22%	22%
18-64	52%	56%	57%
65+	22%	22%	21%
Language other than English	8.2%	3.5%	5.7%
First Nations	3.9%	4.4%	5.5%
Renting	12%	19%	22%
Homeowners	65%	39%	36%
Lone households	25%	27%	26%
Family households	56%	62%	63%
Volunteering	22%	25%	21%
No internet access	24%	34%	27%
SEIFA	932	951	971

Please note: The ABS provide estimates for localities with small populations for privacy purposes, and therefore not all percentages will add up to 100%.

3. Our Vision and Values

Our place vision

The Adelong and Surrounds community are passionate about their natural surrounds, especially the falls and the creek. Although the community want clear and safe access to enjoy them, they also want to ensure they are conserved into the future.

The community love the welcoming, close-knit and supportive country-feel of their town. They want to look after each other and to see more options for young people to help keep them connected to the area. The community also want to see health care for First Nations peoples, elderly and socially isolated residents, as well as a continued spirit of volunteerism and support for older people.

The serenity of Adelong and Surrounds is treasured by the community and they want this characteristic of the place protected by improved traffic calming through the town and consideration of pedestrian safety.

Our values

The Adelong & Surrounds community shared what they value about their place and what makes it special:

Welcoming community

- Volunteering spirit
- Friendly
- Acceptance
- Country living
- Caring for elderly

Country Feel

- Peaceful
- Quiet
- Safe
- Small
- Local businesses
- Historic

Nature

- The Falls
- The creek

Sustainability

- Secure employment with Snowy Hydro
- Localised tourism

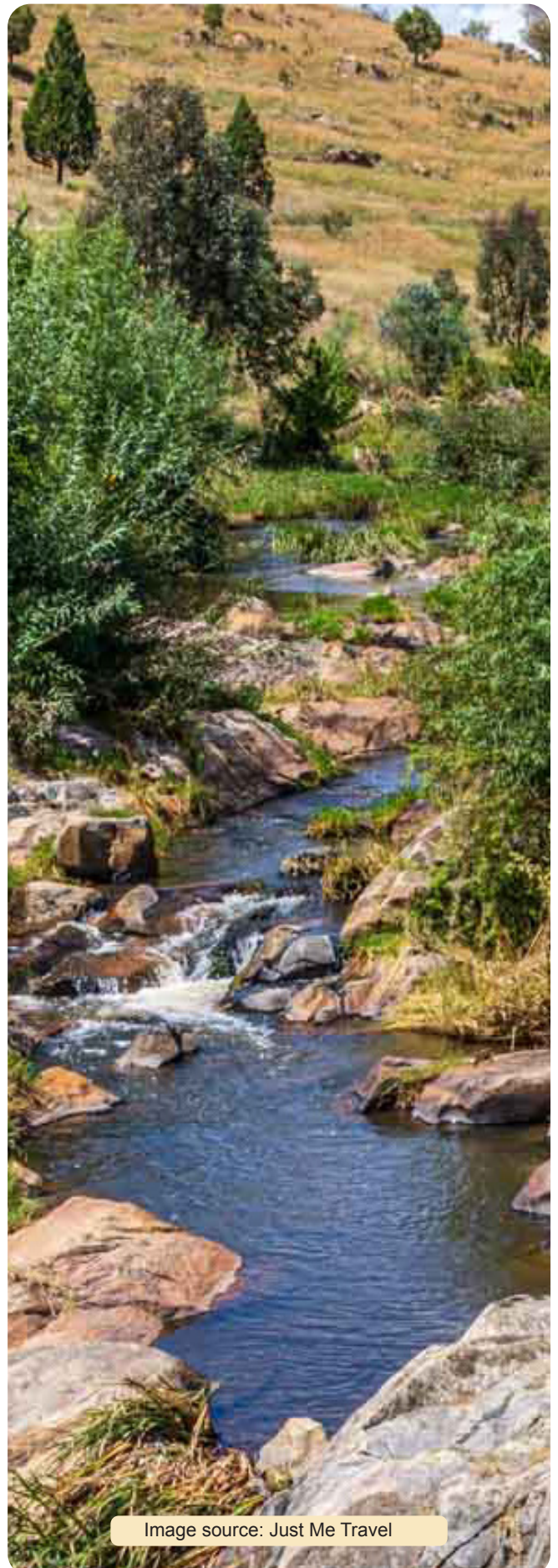
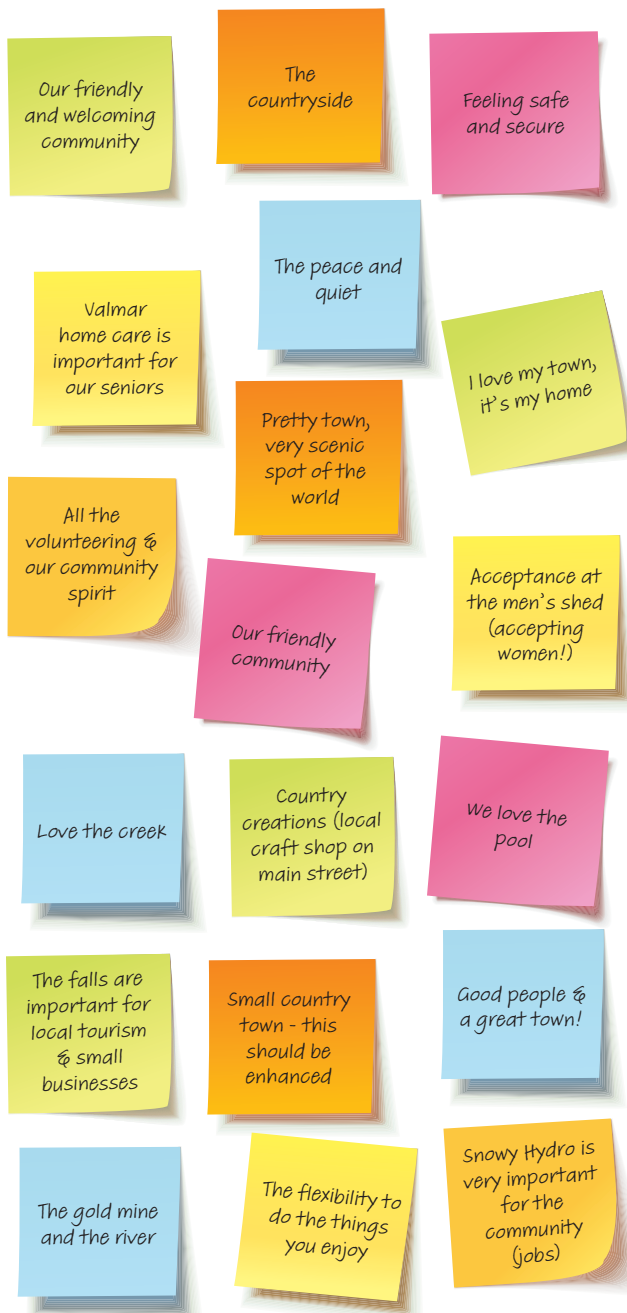


Image source: Just Me Travel



What you told us Adelong and surrounds

LOVE



CHANGE



4. Mapping our community assets

This section maps the community assets that connect us socially and create networks in our community. It provides:

- A map of our social connectors and assessment of how they impact on the social capital in our local area, and
- An assessment of our social connectors, including our strengths and challenges.

Understanding the community assets that connect us socially is a foundation to building social cohesion and emergency preparedness and recovery.

What are our social connectors?

Our social connectors in Adelong and Surrounds have been assessed and mapped overpage. These include:

- **Community groups & events** - groups led by volunteers and our community events
- **Services & institutions** - funded services, Council, and other government agencies
- **Places & spaces** - including the parks, sport spaces, community buildings, cafes, pubs and other places where we meet, attend programs, and connect formally and informally
- **Information sources** - including the local papers, newsletters, and community noticeboards where we receive and share local information.

What is social capital?

Social cohesion is a broad concept that includes the concept of social capital. Social capital refers to the many benefits that arise from having strong social connections and networks within communities.

Social capital has three elements:

"Bonding" social capital characterises social groups where people share many experiences and values associated with their ethnicity, religion or locality and other interests.

"Bridging" social capital focuses on extending interaction between different social groups, which draw people into many different opportunities for pursuing and achieving their aspirations and meeting their needs.

"Linking" social capital connects groups to institutions and organisations that open up opportunities and resolve problems that might otherwise be missed.

Our Social Connectors

Adelong is a small and close-knit community with a strong volunteer base. Local community groups, including the Adelong Progress Association and Adelong Showground Management Committee, who celebrate local historical elements and organise events that bring life to the area.

There are some community facilities which are well loved, including the Men's Shed and the Adelong Services Bowling Club, however overall there are limited places for the community to connect. There is a need to expand these facilities and services to increase opportunities for residents to come together, as well as to attract visitors to stay longer.

The community have access to essential social connectors, including a medical centre, grocery store schools, post office and aquatic centre, however these services can be limited, for example the library is open one day per week, requiring our residents to travel to Wagga Wagga for community facilities and essential services. There is an opportunity for mobile health services.

Heavy vehicles pass through our town centre at high speed which also impacts on the social fabric of the community.

The surrounding natural environment attracts visitors to the town and provides opportunities for residents to be active outdoors, including Adelong Falls, Snowy Valleys Sculpture Trail and the Gold Mill Ruins Walks.

A map of the community assets that connect us is provided overpage on pages 14 and 15. This includes how they support the creation and sharing of social capital in our communities.



Community support

The support of community volunteers such as those that work at the Men's Shed, Adelong Alive Museum, and on the town's upkeep.

Assessment by social connector type

Type	Strengths	Challenges
Community groups & events	<ul style="list-style-type: none"> There are a range of community interests and groups, including the Adelong Men's Shed, Adelong Batlow Bears Rugby League Football Club Inc and Adelong Historical Society. Adelong Show Society is a local community group including a younger demographic that organises local events. Adelong Showground Management Committee is a community organisation that aims to support the Adelong Showground. They have collaborated with the Winter Bites Festival organisers to bring the event to Adelong. Adelong Progress Association is a community organisation with objectives to liaise with Council and promote Adelong as a great place to live, work, holiday and do business. 	<ul style="list-style-type: none"> It can be difficult to retain younger volunteers as they move on from the town.
Services & institutions	<ul style="list-style-type: none"> There are a range of services and institutions located in Adelong including Adelong Police Station, Medical Centre, Adelong Preschool, Adelong Public School and St Joseph's Primary School. The Adelong RFS provide fire and emergency services to the town, with Adelong Showground as the Neighbourhood Safer Place during a bushfire emergency. The brigade includes long standing volunteers. BaptistCare Social Club Adelong provides respite care and social activities for older people. 	<ul style="list-style-type: none"> More regular and quality physical and mental health support is needed for First Nations peoples, the elderly and people who are socially isolated. Internet services and access to broadband and the NBN is poor.
Places & spaces	<ul style="list-style-type: none"> Cafés and the Adelong Services & Citizens Bowling Club are located on the main street and provide a central location for residents and visitors to connect. Adelong Showground is the RFS Safer Place and hosts local events, including the Winter Bites Festival. Adelong Community Aquatic Centre is a family friendly facility that provides a place for community to beat the heat in summer. There is a choice of natural environment and recreation attractions including Adelong Creek, Adelong Falls, Adelong Gold Mill Ruins Walk and Snowy Valleys Sculpture Walk. 	<ul style="list-style-type: none"> Truck noise and speeding creates an unsafe and unpleasant environment. There are limited places to keep young people engaged, attract new residents and encourage visitors to stay in Adelong. There is a lack of pedestrian crossings in the town centre and the roads are prone to flooding during rain events.
Information sources	<ul style="list-style-type: none"> The Tumut and Adelong Times provides local news, information and engagement opportunities. There are two community noticeboards. 	<ul style="list-style-type: none"> Town maps, signage and wayfinding from Adelong Falls to and around Adelong town centre to guide visitors need improvement.

Our social connectors in Adelong

1

BONDING SOCIAL CAPITAL

“Bonding” social capital characterises social groups where people share many experiences and values associated with their ethnicity, religion or locality and other interests.

Adelong is a close-knit community with a range of local services and facilities to connect including schools, pool, shops, post office, Men’s Shed and the Bowling Club.

2

BRIDGING SOCIAL CAPITAL

“Bridging” social capital focuses on extending interaction between different social groups, which draw people into many different opportunities for pursuing and achieving their aspirations and meeting their needs.

Adelong is a small close-knit community with high volunteerism. Many young people move on from the town which puts pressure on the long time older volunteers to continue the services they provide to the community. Adelong has less opportunities to bridge connections from outside the area. There is limited infrastructure for visitors to encourage them to stay.

3

LINKING SOCIAL CAPITAL

“Linking” social capital connects groups to institutions and organisations that open up opportunities and resolve problems that might otherwise be missed.

Adelong does not have access to local, State or Federal services, requiring residents to travel to Tumut and/or Wagga Wagga.

COMMUNITY GROUPS & AND EVENTS

- Adelong Progress Association
- Adelong Show Society
- Adelong Historical Society
- Adelong Men’s Shed Inc – Tumut

SERVICES & INSTITUTIONS

- Adelong RFS
- Adelong Police Station
- Adelong Post Office
- Adelong Medical Centre

PLACES & SPACES

- Adelong Street shops and cafes.
- Adelong Library
- Adelong Services and Citizens Bowling Club
- Adelong Showgrounds
- Apex Park
- Adelong Men’s Shed
- Adelong Alive Museum
- Adelong Community Aquatic Centre
- Adelong Preschool
- Adelong Public School
- St Josephs Primary School
- St Paul’s Anglican Church
- Darlo NSW RFS Shed (Safe place)
- Wondalga RFS Shed (Safe place)

INFORMATION SOURCES

- Tumut and Adelong Times
- 2 Community Noticeboards (Community Centre, General Store (SPAR))



WALK SCORE

Adelong with a Walk Score of 45 has some access to community assets and services on foot but most services need to be accessed by car.

45
WALKSCORE

21km to
TUMUT

Adelong Medical
Centre

Apex Park

Adelong Alive
Museum Inc.

Adelong Post -
Adelong LPO

Adelong Services and
Citizens Bowling Club

Adelong
Veterinary
Clinic

Adelong Police
Station

Adelong
Preschool

Adelong Rural
Fire Service

Adelong Men's
shed

Adelong Community
Aquatic Centre

Adelong Public
School

Saint Joseph's
Primary School

60km to
TUMBARUMBA



Tumut and
Adelong Times

Adelong
Showgrounds
(RFS Safe
Place)

Cred
CONSULTING

“ Adelong is a safe and secure place with a welcoming community.”

- Community Member

5. Our roadmap

We attended consultation and came up with the following small, medium and big ideas:

SMALL

Advertise Adelong & its tourist sites along highway

Clean up the creek behind the caravan park & create access

Encourage tourism with walking trails & access to nature

Support hiking activities that are becoming popular worldwide

Stop trucks speeding through - signage & policing

The men's shed has two buildings and could be used by community

Create more opportunities for community to come together

Attract & support more museum volunteers

Connect the community to the creek

Signage to invite tourists into town after visiting the falls

Falls have double the visitors than the rail trail, lets use

MEDIUM

Improve paving & drains on Main Street

Street cafes open in the evenings

Mobile health service to improve Aboriginal health

Create opportunities for a thriving town centre

Provide public toilets at the old pool

Provide free, self-contained RV camping to diversify visitors

Develop more aged care services

Increase capacity of caravan park for tourists

Improve retail & cafes with consistent hours & night time options

Adelong needs a kick-start. Shortage of people that are active in clubs

BIG

Heated pool to help residents to stay active throughout the year.

Approve & implement Adelong bypass for trucks

Support Adelong theatre to become a strong asset

Ensure new development fits with local character (esp. large blocks)

Our Roadmap

Action	Who
Community groups & events	
Promote local clubs and volunteerism to increase the number of volunteers.	Council Community
Services & institutions	
Advocate for increased delivery of health services in Adelong via mobile services, e.g., for First Nations people, elderly people and young people who are transport disadvantaged	Council Community
Advocate for improved internet services and access to broadband and the NBN across the town to make it accessible for everyone.	Council Community
Places & spaces	
Activate the town centre and extend retail/cafe opening hours to create social opportunities at night and to attract visitors to stay in town.	Community Business
Advocate for more housing to accommodate younger people and itinerant workers.	Council
Develop Adelong as a destination for RVs, including camping options and public toilets.	Community Business
Promote good upkeep to maintain town image and local character.	Community
Celebrate and support town treasures, including the Adelong Theatre and Alive Adelong Museum.	Council Community
Protect natural areas, including cleaning up of Adelong Creek, improved access to natural areas and wildlife conservation.	Community Council Landcare
Information sources	
Improve town maps, signage and wayfinding, and promote attractions including Adelong Falls and the Gold Mill Ruins Walk.	Council Business Community

