



Our connected community roadmap

Jingellic & Surrounds

Acknowledgement of Country

We acknowledge the traditional custodians of this land and pay respects to Elders past and present.

We recognise Aboriginal people as the original custodians of the lands that comprise the Snowy Valleys Council area and pay our respects to the leaders of the traditional custodians of this land.

Together we acknowledge the contributions of Aboriginal Australians to this country we all live in and share together.

Snowy Valleys Council is committed to enhancing the knowledge and understanding of our communities about the history, heritage and cultures of Aboriginal Australians.



Report title: Jingellic and Surrounds - Our Connected Communities Roadmap

Client: Snowy Valleys Council

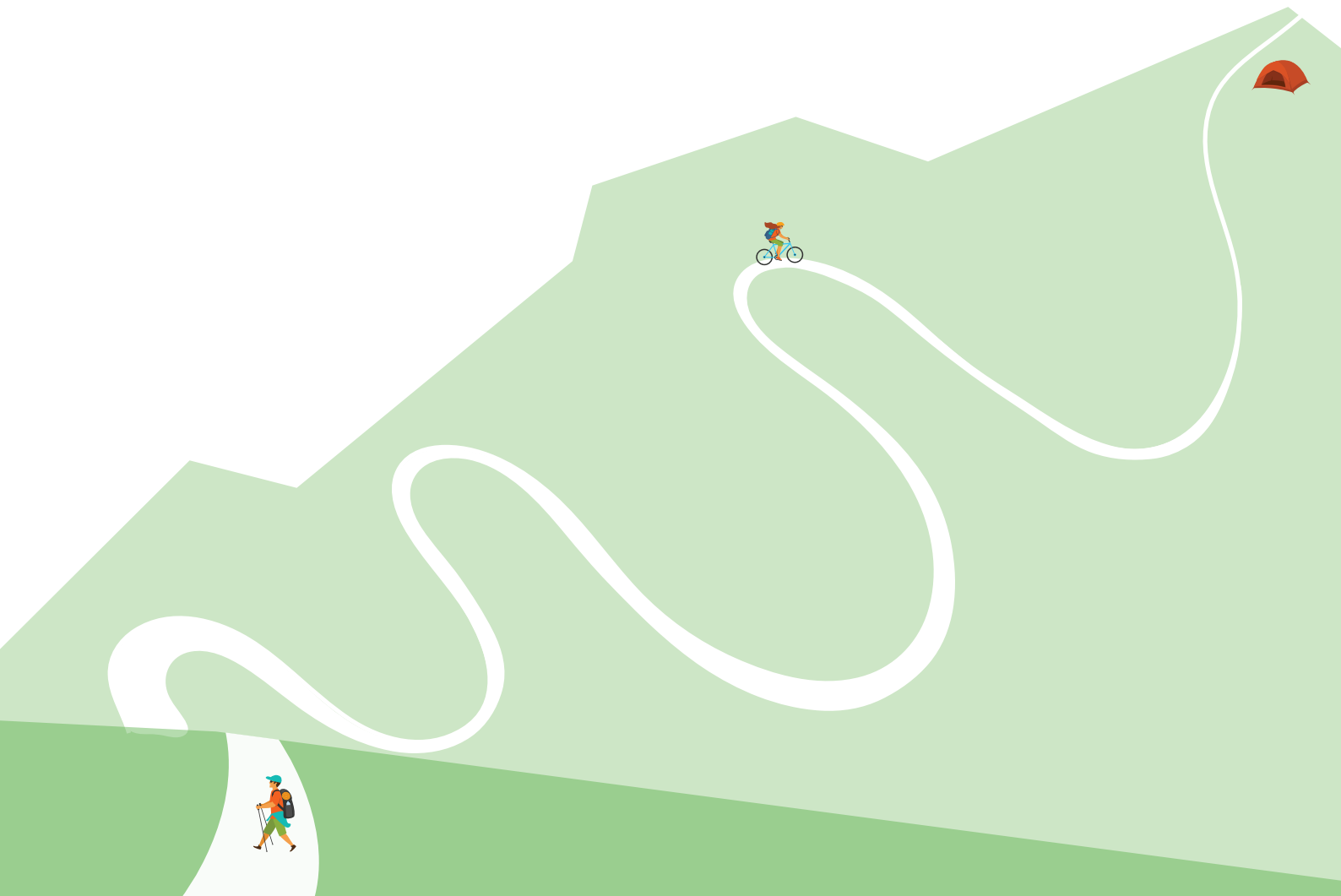
Version: Final

Date: October 2022

This material is made available by Cred Consulting on the understanding that users exercise their own skill and care with respect to its use. Any representation, statement, opinion or advice expressed or implied in this publication is made in good faith. Cred Consulting is not liable to any person or entity taking or not taking action in respect of any representation, statement, opinion or advice referred to in this document.

Table of contents

1. Introduction	4
2. Our Community	7
3. Our Vision and Values	10
4. Mapping our Community Assets	12
5. Our Roadmap	16



1. Introduction

Background

The past few years have been difficult for our community, with the impacts of the 2019-2020 Black Summer Bushfires and COVID-19 lockdowns.

Snowy Valleys Council (Council), through partial funding from the NSW Community Recovery and Resilience Fund, has been working with our local community to prepare community-led plans aimed at understanding our places, spaces and networks that connect us to build stronger more socially cohesive and resilient communities.

Research from Resilient NSW and NCOSS tells us that for communities to be resilient in the face of emergencies, they need to be connected with each other, their places, and local services and institutions. Knowing our neighbours, having good relationships with friends and family, and being part of a connected community means someone will notice if we're missing, help if we are in trouble and get us back on our feet after the crisis has passed.

Building stronger communities

Resilience NSW has identified a number of ways that we can build stronger communities and be prepared for emergencies, respond as a community, and recover together. This includes:

- Understanding our local community including the people and place context - including our history, values and aspirations
- Recognising the complexity of different and unique places, because successful recovery is responsive to the complex and dynamic nature of both emergencies and a community
- Using community-led approaches - being community centred, responsive and flexible, and engaging with communities to move forward
- Coordinating activities - successful recovery requires a planned, coordinated and adaptive approach between community and partner agencies and requires a range of social connectors, and community assets, for this to occur effectively
- Recognising and building capacity - successful recovery is built on effective communication, networking and partnership between communities, services, and government agencies/ institutions.

The importance of planning for social cohesion

The Scanlon Foundation (2021) defines social cohesion as being concerned with: "the extent of shared values, mutual respect and acceptance of difference, as well as trust between people and trust in institutions".

Social cohesion is about having strong bonds between individuals and institutions within a society, resulting in positive quality of relationships that are rooted in equal and just treatment, respect and care for one another. Social cohesion is an important foundation for cooperation towards shared outcomes.

Research shows that connected communities, with strong networks, trust, social spaces to connect, and bonds recover more quickly from adversity like the ones we've recently experienced in Jingellic and Surrounds.

The Resilient Cities Network's "Measuring Social Cohesion Guide" notes that:

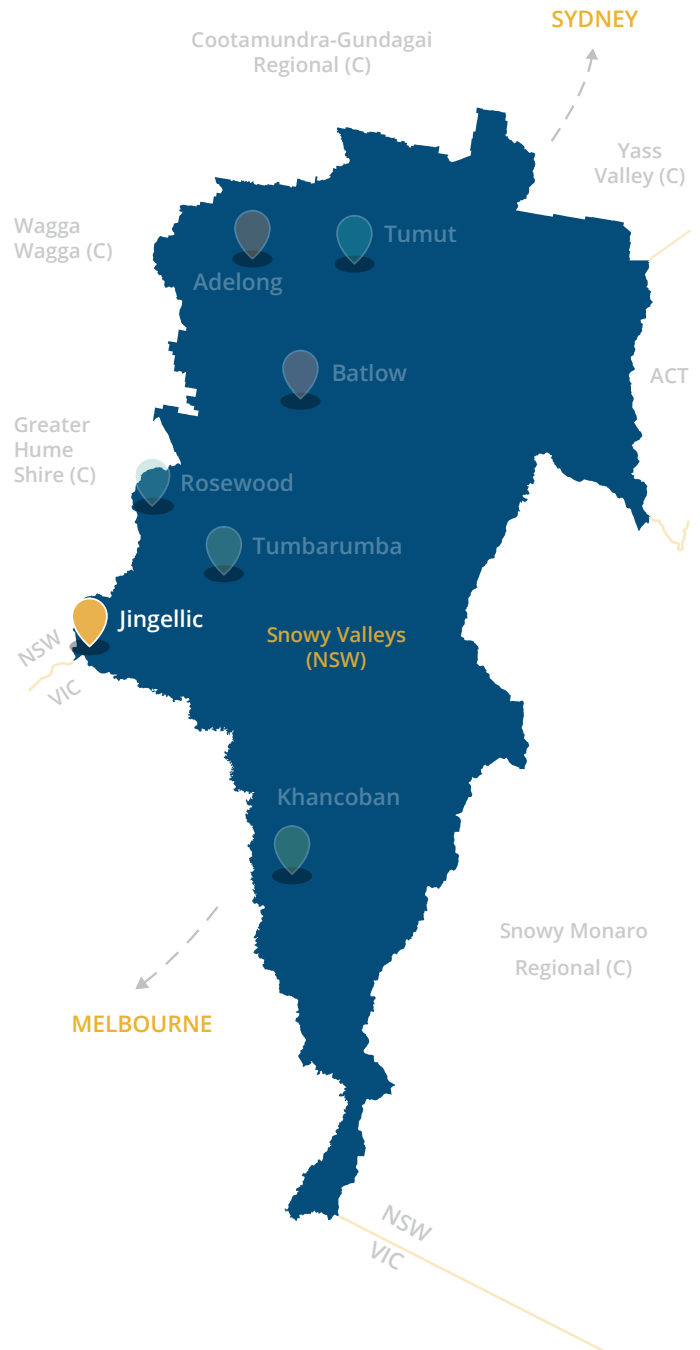
"Higher levels of social cohesion and positive social interactions serve to strengthen the overall fabric of the city, allowing communities to bounce back faster and rebuilt more efficiently after experiencing major shocks and stresses."

Our plan for a connected place

This *Our Connected Communities Roadmap for Jingellic and Surrounds* is a community-led plan to build a socially connected, resilient place supported by the community assets needed to plan for, respond to, and recover from emergencies. Jingellic and Surrounds includes the localities of Jingellic, Tooma, Ournie, Maragle and Walwa (outside of LGA, across the border in Victoria).

The Roadmap sets a vision and values as identified by our local community to strengthen community connections and our resilience locally, and identifies ideas and actions to improve access to the community assets we need to better withstand future challenges and emergency events. It provides our resident and business community, Council and other institutions with the information needed to work in partnership with us.

It acknowledges that our social connectors - the community groups and events; services and institutions; places and spaces; and information sources - play a central role in how socially cohesive we are and focuses on identifying community-led initiatives and priorities for the improvement of our place and community.



Our Community Road Map Locations
(Source: Cred Consulting 2022)

What's in this Roadmap?

This Roadmap includes:

- Our community demographic and place profile
- Our community's vision and values
- What we love and what we'd change about our place
- A map of our community assets, or "social connectors" which bring our community together
- Assessment of our social connectors, our social capital, and identification of strengths and challenges
- Our ideas for how to make our place stronger and more socially connected, and
- An Action Plan for how our community and other institutions can work together to build a strong, socially connected and resilient place.

"Jingellic is a small village, and community is important. We are a bit of a hidden treasure, as not a lot of people have visited, however many have heard of the Jingellic Hotel."

- Community Member

How was this Roadmap developed?

This Roadmap was developed in partnership with the Jingellic and Surrounds community and Snowy Valleys Council acknowledging that the creation of strong socially cohesive communities must be community-led. Our local people and community groups and services have a critical role to play in community building, emergency preparedness and recovery. Engagement with the community included:

- Love Letters to Local Places postcards
- Places We Connect Boards, built by the Batlow Men's Shed
- Pop-up stalls in main streets
- Community meet ups in local community spaces
- Interviews with service providers, businesses, Council, and community groups, and
- Submissions via Council's Have My Say Page.

How can we use this Roadmap?

How can Council use this Roadmap?

Council can use this Roadmap for forward planning and resource allocation for infrastructure, strategic city planning and social development activities within the annual Operational Plan process.

How can Councillors use this Roadmap?

Councillors can use this Roadmap for advocacy, lobbying and promotion of community successes and challenges to government agencies, industry and all levels of government for funding support or program delivery.

How can community members and groups use this Roadmap?

Community members and groups can use this Roadmap for galvanising community group and volunteer action around identified activities for improvement of social cohesion and sourcing grant funding.



2. Our community

Our place

Jingellic and Surrounds includes the localities of Jingellic, Tooma, Ournie, Maragle and Walwa.

Jingellic is a picturesque village nestled on the banks of the upper Murray River. The surrounding countryside is prime agricultural grazing land and produces some of Australia's best beef. Our town is located on the traditional lands of the Wiradjuri People.

Jingellic is a cross border community, located on the NSW-Victoria border and two federal electorates. The heart of the village is the Jingellic Pub and the nearby free camping ground on the riverbank is a popular spot during the warmer months.

Remnants of the original Jingellic Bridge are upstream of our current bridge and is of significant heritage value for the community.

Given the proximity to Victoria, the Jingellic community has strong economic and social connections across the river. Our closest service centre is Tumbarumba, which is 43km away.

Tooma is our second largest village community, meaning 'large gum tree' in local language. Tooma has a diverse history from grazing farmland to experiencing its own gold rush, and many of the families that first settled in the late 1830s continue to live in our district.

The Tooma Valley continues to be highly regarded for beef cattle, dairying, sheep grazing and grass seed production. The annual Tooma Easter Gymkhana is a popular family event celebrating the tradition of skilled horsemanship passed down through generations.

Nearby, the Southern Cloud Lookout provides stunning vistas across the foothills of the Snowy Mountains to the Main Range.

Ournie is a peaceful, quiet farming district east of Jingellic, south of Tumbarumba and within the beautiful Upper Murray region.

The community assets and those social connectors that make our place special are detailed in Section 4, Mapping our Community Assets.



Rare climate

We experience four seasons in a year and enjoy the weather and cooler climate, including snow twice a year.



Close-knit community

Our Jingellic community is friendly and welcoming, and we take the time to care for each other.



Scenic countryside and the river

Jingellic is a beautiful place to live, as well as a destination for visitors and tourists.



Our people

Our residents are older in age.

Jingellic and Surrounds is home to approximately 258 people and our residents are older compared to the average across our LGA. Only 5% of our population is aged 18 years and under and our median age is 58, which is 15 years older than the average of Regional NSW.

Our community is less diverse than other places in our LGA.

We have a smaller population of First Nations people living in Jingellic and Surrounds (1.6%), compared to our LGA (4.4%) and Regional NSW (5.5%).

Less than 9% of our residents speak a language other than English at home. While this is higher than the average across our LGA and Regional NSW, this is less compared to other localities, including Adelong and Batlow. This is likely because we have less itinerant workers and industries in our area.

We earn more than \$200 less per week than the average.

Our median household income is \$900 per week which is approximately \$200 less per week than our LGA and Regional NSW. This could be because many people in our community are retired. While we may earn less per week, our SEIFA score of 1034 indicates that we live well and experience socio-economic advantage.



Our temperature extremes are rare throughout Australia, and we have relative water and climate change safety in this microclimate with good and steady water supply."

- Community member

Our residents own their homes and are well connected to the internet.

Our residents are more likely to own their home compared to the average across our LGA, with 47% of our residents owning their homes. We however have a lower proportion of family households (47%) compared to our LGA (63%).

Although our internet connection can be unstable at times, we have a higher proportion of internet access compared to our LGA, with nine in ten residents connected to the internet.

We are a close-knit community and volunteer our time to support one another.

One in three residents (or 32%) in Jingellic and Surrounds volunteer their time, which is higher than the average in our LGA and across Regional NSW.

Table 1 - Our people and household characteristics
(Based on 2021 ABS Census for the areas of Jingellic, Tooma, Ournie, Maragle and Walwa)

	Jingellic & Surrounds	Snowy Valleys Council	Regional NSW
Total population	258	14,395	-
Median age	58	45	43
Median household income	\$900	\$1,122	\$1,166
Under 18	5%	22%	22%
18-64	46%	56%	57%
65+	9%	22%	21%
Language other than English	8.9%	3.5%	5.7%
First Nations	1.6%	4.4%	5.5%
Renting	5%	19%	22%
Homeowners	47%	39%	36%
Lone households	21%	27%	26%
Family households	47%	62%	63%
Volunteering	32%	25%	21%
No internet access	11%	34%	27%
SEIFA	1034	951	971

* The ABS provide estimates for localities with small populations for privacy purposes, and therefore not all percentages will add up to 100%.

3. Our Vision and Values

Our place vision

Jingellic is a hidden treasure with beautiful scenery and a connected and supportive community. The community would like to continue to welcome visitors to appreciate all the town has to offer including the river, the pub, the unique climate.

The community want to protect the serenity of their town into the future by calming traffic, prioritising pedestrians and improving waste management.

The localities of Tooma, Ournie and Maragle were severely impacted and isolated both during and in the immediate aftermath of the 2019/20 bushfires and the communities are determined to improve access to community spaces for safety and ongoing community connection.

Our values

The Jingellic and Surrounds community shared what they value about their place and what makes it special:

Family Connection

- Connection to each other
- Physical connection
- Connection to Tumbarumba
- Connection to the Murray River

Community

- Small
- Close-knit
- Supportive
- A hidden treasure

Countryside

- Views
- Location

Climate

- Four distinct seasons
- A unique climate
- Climate change safety with good and steady water supply





What you told us Jingellic and surrounds

LOVE

The community

Children's play ground on Jingellic Road

Jingellic hub

The general store

The country side

Very scenic countryside

Children's bus stop on Jingellic Road

The new "Flamin Hell" sculpture

Community events at the Jingellic hub, like the men's high tea

Tight and small knit community

Our children love to come back here to visit us here

Our climate is rare throughout Australia

The walking track from the Hotel to the show grounds

Jingellic Hotel and Jingellic store

New public toilets

The new public toilets.

A beautiful place to live, as well as a destination for visitors

CHANGE

Speed limit in the village of 60km/h is not safe

Log truck traffic 24/7

Roads need kept well maintained (GHSC and SVC)

Police to patrol and speed check traffic in town

Jingellic Road is extremely busy with heavy trucks (log trucks and other)

Trucks, cars and caravans rarely slow down through town.

There are no safe pedestrian crossing areas

Pedestrians have to walk on the roads with speeding traffic (nature strip is hard to use with pram or for elderly)

No pedestrian footpaths (besides new walking track on River Rd)

Murray Timber Group and other heavy industry should champion and support road upkeep

Rubbish disposal pick-up during the summer at the campsite



4. Mapping our community assets

This section maps the community assets that connect us socially and that create networks in our community. It provides:

- A map of our social connectors and assessment of how they impact on the social capital in our local area, and
- An assessment of our social connectors, including our strengths and challenges.

Understanding the community assets that connect us is a foundation of building social cohesion and emergency preparedness and recovery.

What are our social connectors?

Our social connectors in Jingellic and Surrounds have been assessed and mapped overpage. These include:

- **Community groups & events** - groups led by volunteers and our community events
- **Services & institutions** - funded services, Council, and other government agencies
- **Places & spaces** - including the parks, sport spaces, community buildings, cafes, pubs and other places where we meet, attend programs, and connect formally and informally
- **Information sources** - including the local papers, newsletters, and community noticeboards where we receive and share local information.

What is social capital?

Social cohesion is a broad concept that includes the concept of social capital. Social capital refers to the many benefits that arise from having strong social connections and networks within communities.

Social capital has three elements:

“Bonding” social capital characterises social groups where people share many experiences and values associated with their ethnicity, religion or locality and other interests.

“Bridging” social capital focuses on extending interaction between different social groups, which draw people into many different opportunities for pursuing and achieving their aspirations and meeting their needs.

“Linking” social capital connects groups to institutions and organisations that open up opportunities and resolve problems that might otherwise be missed.

Our social connectors

Jingellic and Surrounds is home to an active community with a strong volunteer base. The Jingellic Pub and General Store are important social meeting spaces for the community. Ournie Hall and Tooma Recreation Reserve are important social meeting spaces.

Local events, including Jamming at Jingellic, Tooma Markets and Tooma Gymkhana, also bring community together and attract people from nearby localities. Events are hosted at the Jingellic Showgrounds, a venue owned and maintained by Jingellic Hub Inc. volunteers.

The independence and drive of the Jingellic Hub is a strength for the community. They have played a vital support role in emergency events, such as the recent bushfires, and endeavour to build community resilience.

Other than a children’s playground, there are limited options for children and young people to socialise and learn, including schools, play areas and employment opportunities, and therefore many young adults move away from Jingellic and Surrounds.

The Murray River provides water recreation opportunities and attracts visitors, who may stay at the Jingellic Pub or the free campground.

There are limited retail options and services, requiring residents to travel to other centres in the LGA and across to Walwa in Victoria to access services and purchase goods. There is a need for mobile services to visit the area.

A map of the community assets that connect us is provided overpage on pages 14 and 15. This includes how they support the creation and sharing of social capital in our communities.

“ If we hadn’t had the Jingellic Hub we would have been much worse off during the recent bush fires – it functioned as an information point, first aid station, information centre, healthcare, welfare, emergency respite. We provided 400+ meals/day during that time.”

- Local Community Group

Assessment by social connector type

Type	Strengths	Challenges
Community groups & Events	<ul style="list-style-type: none"> The Jingellic Showgrounds and facilities are owned and maintained by Jingellic Hub Inc, an incorporated body led by an active and enthusiastic committee of volunteers. They also organise local events. There are two feature events, including Jamming at Jingellic during spring and Tooma Gymkhana, an annual horse event. Tooma Markets (Three Bridges Market). Jingellic Recovery Committee, a subcommittee of the Jingellic RFS provide assistance and advocate for community members, organise fundraising events, and provide information to support recovery from the Black Summer bushfires. The Tooma Recreation Reserve Committee is very active and has been successful in receiving funds and delivering projects at the facility for a long period of time, including the recent Bushfire Local Economic Recovery Fund (BLERF) grant to the value of \$997,446 for the Tooma Hall upgrade. The Ournie Community Committee is working to build a new Community Hall due to the beloved Ournie School Building, which was used as a Community Hall, being burnt in the bushfires of January 2020. 	
Services & Institutions		<ul style="list-style-type: none"> There are no Council, State or Federal services in Jingellic requiring residents to travel to other centres in the LGA and across to Walwa in Victoria.
Places & Spaces	<ul style="list-style-type: none"> Jingellic Pub and General Store are the two key social meeting spaces and very important to the community. The Murray River provides environmental amenity and water recreation opportunities for residents and visitors. The former Jingellic school site (on Crown Land) presents an opportunity for a community centre. Brigham House BnB is a historic country guest house located next to Tooma Inn. Children's playground on Jingellic Road. Jingellic Reserve is an allocated RFS Neighbourhood Safer Place and a popular spot during the warmer months. Tooma Sportsground Oval is an allocated RFS Neighbourhood Safer Place. New sculptures in town, including 'Flamin' Hell', created with found remnant metals from recent bushfires. 	<ul style="list-style-type: none"> The entry to the town needs to be cleaned up to encourage visitors to want to stop here and to help with community pride. Roads are not well maintained and are essential for community to operate business. Rubbish bins in campsites and public places overflow on a regular basis, which is unsightly and can be foul-smelling in summer. Truck noise and speeding creates an unsafe and unpleasant environment. There are limited places to keep children and young families rooted in Jingellic.
Information sources	<ul style="list-style-type: none"> Jingellic Hub Inc. Newsletter includes information about grants and funding, local committees and clubs, and upcoming events. 	<ul style="list-style-type: none"> Community noticeboard is not used effectively and there can be more notices from Council.

Our social connectors in Jingellic & Surrounds

1

BONDING SOCIAL CAPITAL

“**Bonding**” social capital characterises social groups where people share many experiences and values associated with their ethnicity, religion or locality and other interests.

The local community meets at the Jingellic Pub and General Store to socially connect and catchup. The Showground hosts a number of events that bring people together and the Jingellic Hub Inc is run by local volunteers.

2

BRIDGING SOCIAL CAPITAL

“**Bridging**” social capital focuses on extending interaction between different social groups, which draw people into many different opportunities for pursuing and achieving their aspirations and meeting their needs.

Jingellic has limited built social connectors to bring people from outside into the area. However, the Murray River attracts people with water recreation, who may stay at the pub, Honeysuckle Cottage or the free campground.

3

LINKING SOCIAL CAPITAL

“**Linking**” social capital connects groups to institutions and organisations that open up opportunities and resolve problems that might otherwise be missed.

Residents of Jingellic have to travel 43 km to Tumbarumba or 109km to Tumut to access Council, State or Federal services. There are none locally, there may be a need for mobile services to visit the area.

COMMUNITY GROUPS & EVENTS

- Jamming at Jingellic (event)
- Tooma Gymkhana
- Tooma Market

SERVICES & INSTITUTIONS

- Australia Post Tooma
- Jingellic Hub Inc.

PLACES & SPACES

- Jingellic General Store
- Jingellic Pub
- Tooma Inn
- Brigham House BnB
- Jingellic Reserve (RFS Safe Place)
- Tooma Sportsground Oval (RFS Safe Place outside Jingellic centre)
- Jingellic Showgrounds
- Flamin’ Hell Sculpture
- Honeysuckle Cottage

INFORMATION SOURCES

- Jingellic Hub Inc. Newsletter
- 1 Community Noticeboard (Inside General Store)



WALK SCORE

Jingellic has a very low Walk Score of 10, indicating that people need to travel by car to access community assets.

10
WALKSCORE



Jingellic General Store and Jingellic LPO

Flamin' Hell Structure

Jingellic Oval (RFS Safe space)

43 Km to TUMBARUMBA

109 Km to TUMUT

Jingellic Showground, The Hub Inc.

Jingellic Hub Inc. Newsletter

Jingellic Pub

Jingellic Reserve

70km to MARAGLE

49 Km to TOOMA (Brigham House BnB, Tooma Inn.)

22 Km to OURNIE (Ournie Hall)

MURRAY RIVER

NSW
VIC

Cred
CONSULTING

Community asset improvements and projects underway

Ongoing and planned major projects within a village influences the quality of places and its liveability. Recently completed and currently ongoing projects in Jingellic include:

Council led projects:

- Jingellic Multi Use Track
- Tooma Beautification Upgrade

Community led projects:

- Jingellic Showground Water Bore and Irrigation
- Tooma Amenity Appearance.

Project:	Grant:
Tooma Hall redevelopment	\$1,000,000 (Federal Government Black Summer Bushfire Recovery Grant)



We have a grant to upgrade the Tooma Hall, which will be really special – once that happens (18-24m timeframe) we hope the hall will bring in more activity and events (puggles, mobile daycare, used to use the hall and is aiming to come back to hire the hall, hope for weddings in the future, had yoga and bootcamp there in the past)."

- Community Member



Image source: Jingellic Hub Showgrounds

5. Our roadmap

We attended consultation and came up with the following small, medium and big ideas:

SMALL

Install signage to encourage vehicles to adhere to speed limits

Include the new "Flamin Hell" sculpture in the SVC sculptures trail

Clean up all the wattles on road frontage (on left as you enter Jingellic)

Encourage local police to regularly enforce speed limits

The church yard needs a clean up

Old Jingellic School needs clean up

SVC to promote Jingellic as part of the tourist link to the snow fields

Road entry into Jingellic needs a clean up

Jingellic needs to be promoted along with the Tumberumba attractions

SVC should visit our town on a regular basis, so people and councillors meet

MEDIUM

Provide pedestrian footpaths and crossings

The roadsides from the Showgrounds to the bridge needs maintenance

Old Jingellic school site is beautiful - make it a public park/picnic site

Plant more deciduous trees on all roads approaching Jingellic

Continue walking track from Hotel via show grounds up to the bridge

Join walking track with the track to Walwa township (via a new pedestrian bridge)

New community notice board (it could where SVC might post notices and Place Plans updates, Meeting notices.)

Improve rubbish pick-up for camp site so people want to come back

BIG

Certified weighbridge on Jingellic Road

Fuel Service Station (for campers and residents, self-serve, card only)

A footbridge crossing the Murray River is needed (would incr. tourism)

Our Roadmap

Action	Who
Community groups & events	
Build local capacity through the Jingellic Hub Inc. to deliver local programs and events.	Jingellic Hub Council
Services & institutions	
Advocate to Council for regular mobile services to be delivered in Jingellic township.	Community Council
Places & Spaces	
Work with Council to identify opportunities for the former Jingellic School site located on Crown Land as a public place utilised by the community. Examples include public park or community centre.	Community Council
Coordinate regular clean ups to preserve the towns appearance. Council could support this effort through the provision of additional bins in public places.	Community Council
Improve promotion of Jingellic as a tourist destination, including: <ul style="list-style-type: none"> • Jingellic as an entry point to the Snowy Mountains and Kosciuszko National Park • Murray River as a destination for water recreation activities to attract visitors to the town • Jingellic included in the Snowy Valleys Sculpture Trail. 	Council Community Destination NSW Sculpture by the Sea
Work with Council to identify opportunities to extend walking tracks, including from Jingellic Hotel to Jingellic Bridge and Walwa.	Community Council
Develop a community-led campaign to encourage drivers to slow down when passing Jingellic and nearby localities.	Community
Complete Tooma Hall modernisation and replacement of assets to make the hall and facilities more compliant to current standards and more suitable as an evacuation area.	Community Council
Complete Ournie Hall development to replace the destroyed Ournie School Hall and create a safe place in an emergency, a place for social activity, a place where we can offer support to each other.	Community Council
Information sources	
Work with Council to ensure local information is distributed via the noticeboard and the Jingellic newsletter	Community Jingellic Hub Council

