

An isometric map of a community area. A thick black road runs diagonally from the top left to the bottom right. A blue river flows along the right side of the road. Various buildings are scattered throughout: a small orange house with fireworks above it in the top left; a school with a teacher at a blackboard and students at desks in the middle left; a large multi-story building with a parking lot in the top middle; a red and yellow caravan in the middle right; a post office with a red sign in the bottom right; and several smaller houses and sheds. Recreational areas include a tennis court, a basketball court, and a person on a bicycle. Trees of different shapes and sizes are placed around the buildings and roads. A dashed purple line follows a path through the landscape. A white banner with text is on the right side, and a large white text block is on the left side.

Our connected community roadmap

Rosewood & Surrounds

Acknowledgement of Country

We acknowledge the traditional custodians of this land and pay respects to Elders past and present.

We recognise Aboriginal people as the original custodians of the lands that comprise the Snowy Valleys Council area and pay our respects to the leaders of the traditional custodians of this land.

Together we acknowledge the contributions of Aboriginal Australians to this country we all live in and share together.

Snowy Valleys Council is committed to enhancing the knowledge and understanding of our communities about the history, heritage and cultures of Aboriginal Australians.



**Snowy
Valleys
Council**

Cred
CONSULTING

Report title: Rosewood and Surrounds - Our Connected Communities Roadmap

Client: Snowy Valleys Council

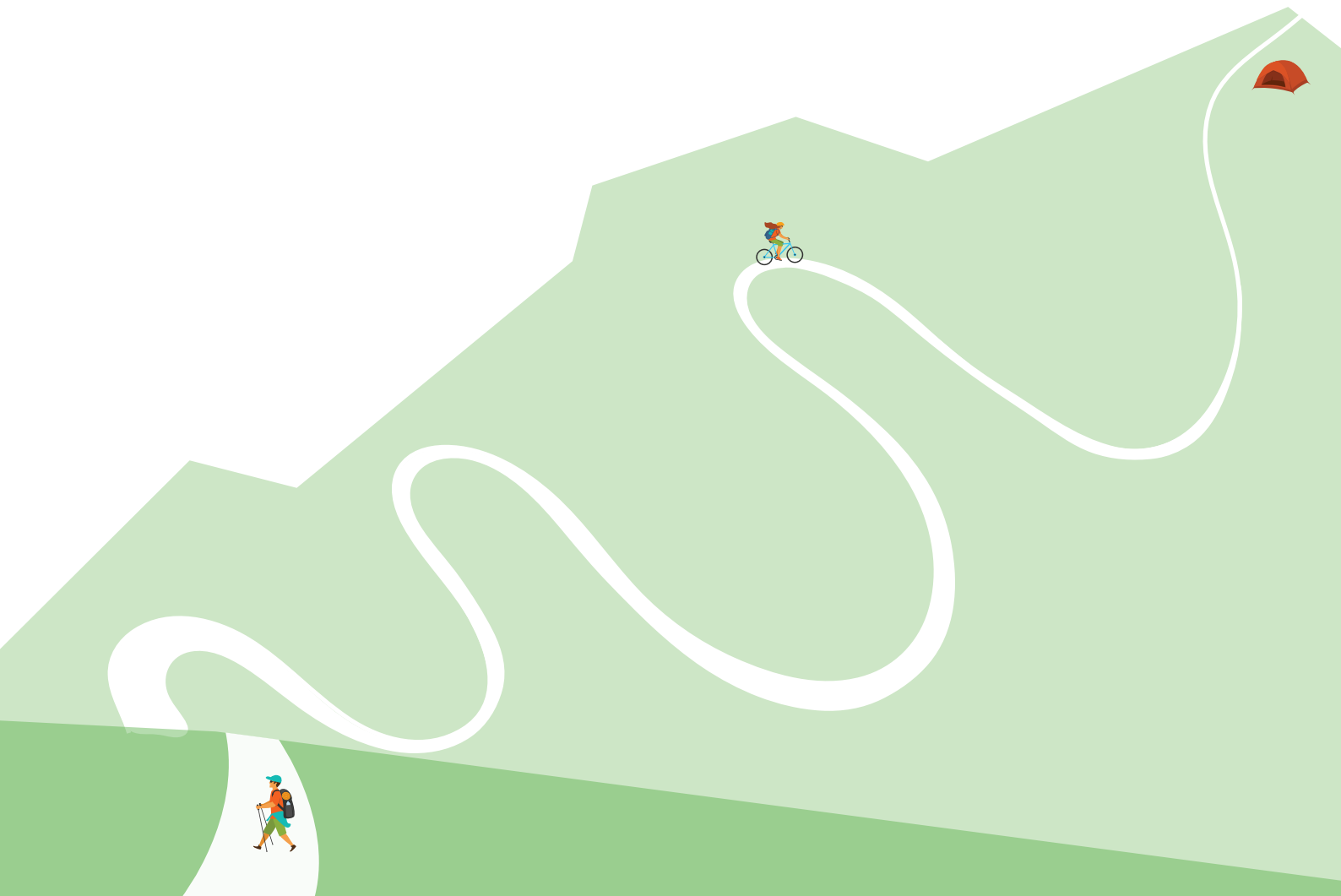
Version: Final

Date: October 2022

This material is made available by Cred Consulting on the understanding that users exercise their own skill and care with respect to its use. Any representation, statement, opinion or advice expressed or implied in this publication is made in good faith. Cred Consulting is not liable to any person or entity taking or not taking action in respect of any representation, statement, opinion or advice referred to in this document.

Table of contents

1. Introduction	4
2. Our Community	7
3. Our Vision and Values	10
4. Mapping our Community Assets	12
5. Our Roadmap	16



1. Introduction

Background

The past few years have been difficult for our community, with the impacts of the 2019-2020 Black Summer Bushfires and COVID-19 lockdowns.

Snowy Valleys Council (Council), through partial funding from the NSW Community Recovery and Resilience Fund, has been working with our local community to prepare community-led plans aimed at understanding our places, spaces and networks that connect us to build stronger more socially cohesive and resilient communities.

Research from Resilient NSW and NCOSS tells us that for communities to be resilient in the face of emergencies, they need to be connected with each other, their places, and local services and institutions. Knowing our neighbours, having good relationships with friends and family, and being part of a connected community means someone will notice if we're missing, help if we are in trouble and get us back on our feet after the crisis has passed.

Building stronger communities

Resilience NSW has identified a number of ways that we can build stronger communities and be prepared for emergencies, respond as a community, and recover together. This includes:

- Understanding our local community including the people and place context - including our history, values and aspirations
- Recognising the complexity of different and unique places, because successful recovery is responsive to the complex and dynamic nature of both emergencies and a community
- Using community-led approaches - being community centred, responsive and flexible, and engaging with communities to move forward
- Coordinating activities - successful recovery requires a planned, coordinated and adaptive approach between community and partner agencies and requires a range of social connectors, and community assets, for this to occur effectively
- Recognising and building capacity - successful recovery is built on effective communication, networking and partnership between communities, services, and government agencies/institutions.

The importance of planning for social cohesion

The Scanlon Foundation (2021) defines social cohesion as being concerned with: "the extent of shared values, mutual respect and acceptance of difference, as well as trust between people and trust in institutions".

Social cohesion is about having strong bonds between individuals and institutions within a society, resulting in positive quality of relationships that are rooted in equal and just treatment, respect and care for one another. Social cohesion is an important foundation for cooperation towards shared outcomes.

Research shows that connected communities, with strong networks, trust, social spaces to connect, and bonds recover more quickly from adversity like the ones we've recently experienced in Rosewood and Surrounds.

The Resilient Cities Network's "Measuring Social Cohesion Guide" notes that:

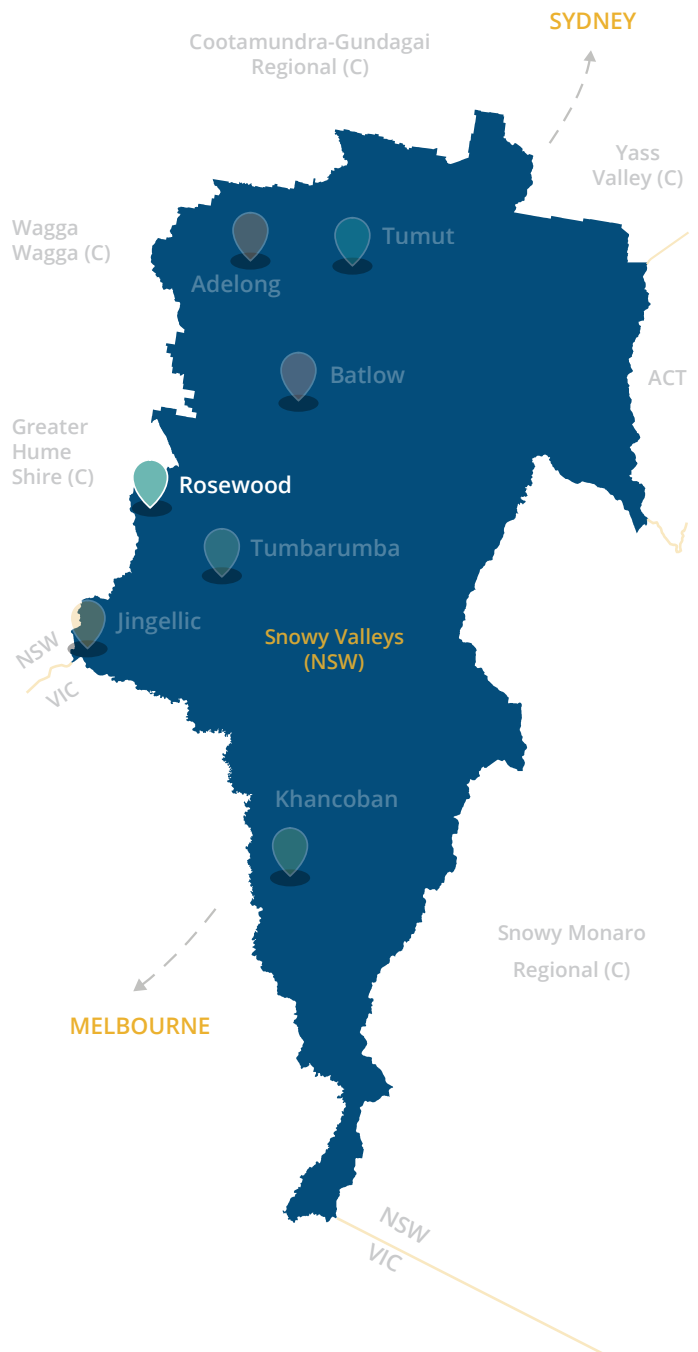
"Higher levels of social cohesion and positive social interactions serve to strengthen the overall fabric of the city, allowing communities to bounce back faster and rebuilt more efficiently after experiencing major shocks and stresses."

Our plan for a connected place

This *Our Connected Communities Roadmap for Rosewood and Surrounds* is a community-led plan to build a socially connected, resilient place supported by the community assets needed to plan for, respond to, and recover from emergencies. Rosewood and Surrounds includes the localities of Rosewood.

This Roadmap sets a vision and values as identified by our local community to strengthen community connections and our resilience locally, and identifies ideas and actions to improve access to the community assets we need to better withstand future challenges and emergency events. It provides our resident and business community, Council and other institutions with the information needed to work in partnership with us.

It acknowledges that our social connectors - the community groups and events; services and institutions; places and spaces; and information sources - play a central role in how socially cohesive we are and focuses on identifying community-led initiatives and priorities for the improvement of our place and community.



Our Community Road Map Locations
(Source: Cred Consulting 2022)

What's in this Roadmap?

This Roadmap includes:

- Our community demographic and place profile
- Our community's vision and values
- What we love and what we'd change about our place
- A map of our community assets, or "social connectors" which bring our community together
- Assessment of our social connectors, our social capital, and identification of strengths and challenges
- Our ideas for how to make our place stronger and more socially connected, and
- An Action Plan for how our community and other institutions can work together to build a strong, socially connected and resilient place.

How was this Roadmap developed?

This Roadmap was developed in partnership with the Rosewood and Surrounds community and Snowy Valleys Council acknowledging that the creation of strong socially cohesive communities must be community-led. Our local people and community groups and services have a critical role to play in community building, emergency preparedness and recovery. Engagement with the community included:

- Love Letters to Local Places postcards
- Places we Connect Boards, built by the Batlow Men's Shed
- Pop-up stalls in main streets
- Community meet ups in local community spaces
- Interviews with service providers, businesses, Council, and community groups
- Submissions via Council's Have My Say Page.

How can we use this Roadmap?

How can Council use this Roadmap?

Council can use this Roadmap for forward planning and resource allocation for infrastructure, strategic city planning and social development activities within the annual Operational Plan process.

How can Councillors use this Roadmap?

Councillors can use this Roadmap for advocacy, lobbying and promotion of community successes and challenges to government agencies, industry and all levels of government for funding support or program delivery.

How can community members and groups use this Roadmap?

Community members and groups can use this Roadmap for galvanising community group and volunteer action around identified activities for improvement of social cohesion and sourcing grant funding.



2. Our community

Our place

Rosewood and Surrounds includes the locality of Rosewood.

Our village is located in the north-west of the Snowy Mountains, with our local government area split between New South Wales and Victoria. Rosewood is around 365km from Sydney, and spans a large area of approximately 150km considering our small population of 240 people. Our town is located on the traditional lands of the Ngarigo People.

We live in a picturesque area and are well connected to other towns, including our main service centres - Tumbarumba and Wagga Wagga.

Central to our community is the Rosewood Golf Club, General Store and Rosewood Public School. The Rosewood Golf Club is a small community club proudly operated and supported by local volunteers. It provides budget camping options for visitors and is home to the annual Rosewood Country Round Up Music Festival which attracts more than 450 caravans each year, as well as the Rosewood Rodeo, Rosewood Truck Show and Tractor Pull - events that continue to grow and add economic value into our local community.

The Tumbarumba to Rosewood Rail Trail, an easy 21km revitalised trail for walking and cycling opened in April 2020, passes through our beautiful alpine countryside and farmland and has become a popular attraction for both our community and visitors alike.

The community assets and those social connectors that make our place special are detailed in Section 4, Mapping our Community Assets.



Great location

Rosewood is well connected to other towns and to Wagga Wagga for shopping.



Something special about this area is that most locals are generational and have strong connections to Rosewood"

- Community member



The Countryside

Rosewood is located in such a pretty area. The scenery, weather and clean air make it very special.



Rosewood

FROM ROSEWOOD TO:

Tumbarumba 20km
 Hume & Hovell Walking Track 27km
 Paddys River Falls 34km
 Paddys River Flats 36km
 Laurel Hill 42km
 Tooma 55km
 Batlow 58km via Tumbarumba
 Jingellic 65 km
 Tumut 86km via Tumbarumba
 Cabramurra 91km
 Mt Selwyn 98km
 Khancoban 100km
 Kiandra 102km
 Wagga 91km
 Albury 134km
 Thredbo 175km
 Jindabyne 205km
 Cooma 265km
 Canberra 313km via Tumbarumba
 Melbourne 442km
 Sydney 531km

TOURIST INFORMATION
 (02) 6948 3444



Keep our Shire
 Clean and Green.



Our people

We are younger compared to other localities in the Snowy Valleys

Compared to our LGA, we have a lower median age of 43. Considering our small population of around 211 people, we have a large percentage of people under the age of 18 compared to other villages in our LGA, such as Khancoban and Jingellic. This is likely because of Rosewood Public School, which is located in our village centre and provides our families with access to primary education.

Our community is diverse, including First Nations residents and people who speak a language other than English at home

Our town is located on the traditional lands of the Ngarigo People. More than 8% of our population identify as First Nations, which is double compared to our LGA (4.4%) and Regional NSW (5.5%). One in ten residents speak a language other than English at home, which is higher than the average of our LGA (3.5%).

Our residents have lived here for generations and are more likely to own their homes.

Our residents experience more disadvantage compared to the average across our LGA, with a lower average household income (\$956) and a higher SEIFA score (899). Yet our town has a much lower proportion of people renting (7%)

Connected community

Our Rosewood community are friendly and welcoming and we care for each other. Our community has no shortage of volunteers to lend a hand when needed.

compared to our LGA (19%) and more than 58% of our residents own their homes. This can be linked to the fact that many of our residents have generational ties to Rosewood.

We are well connected to the internet

Although some people live outside of town with poor or no internet access, we have a higher proportion of internet access compared to our LGA, with almost four in five residents connected to the internet.

Table 1 - Our people and household characteristics
(Based on 2021 ABS Census for the areas of Rosewood & Surrounds)

Total population	Rosewood & Surrounds	Snowy Valley Council	Regional NSW
	211	14,891	-
Median age	43	45	43
Median household income	\$956	\$1,122	\$1,166
Under 18	20%	22%	22%
18-64	50%	56%	57%
65+	15%	22%	21%
Language other than English	10.4%	3.5%	5.7%
First Nations	8.1%	4.4%	5.5%
Renting	7%	19%	22%
Homeowners	58%	39%	36%
Lone households	13%	27%	26%
Family households	55%	62%	63%
Volunteering	27%	25%	21%
No internet access	19%	34%	27%
SEIFA	899	951	971

* The ABS provide estimates for localities with small populations for privacy purposes, and therefore not all percentages will add up to 100%.

3. Our Vision and Values

Our place vision

Rosewood is a much loved town by its community who care deeply for it and for each other. The community cherish their picturesque, cool climate and clean air.

The community want to leverage the opportunity the rail trail has provided to provide an environment to help grow tourist visitation as well as new residents to settle in the town.

To attract visitors and new residents in the future, the community want to see access to services improved and community assets operational and thriving.

Our values

The Rosewood & Surrounds community shared what they value about their place and what makes it special:

Caring community

- Friendly
- Volunteering
- Supportive
- Multi-generational family ties

Outdoors and open space

- Countryside
- Beauty
- Clean air
- Outdoor activities, including the rail trail

Climate

- Crisp climate



We're a friendly, welcoming and close-knit community, and we're growing due to the rail trail."

- Community member





What you told us Rosewood and surrounds

LOVE

CHANGE

LOVE

- Rail Trail
- Lovely countryside, coffee shop, very pretty
- Growing community due to Rail Trail
- Multi-generational & strong connections to Rosewood
- I like the park, I visit with my friends
- Love cycling the Rail Trail for fitness
- I love my school
- Well-connected to other towns and Wagga for shopping
- Friendly people & welcoming community
- The Rosewood store can hold family dinners & lunches
- Love the countryside & Tumbarumba Men's Shed (Mondays)
- Beautiful scenery, good air and weather
- Tight-knit community
- Love the cool climate & open green spaces - very unique!
- Lots of volunteering & community spirit

CHANGE

- Open the service station
- Drop the speed limit from 60 to 50
- We need new & young residents
- Tumba pool should be heated so we can use it longer
- Not enough land available for development for new residents
- Use Crown land next to school for the community
- Reopen Rosewood Men's Shed
- The club used to be a community hub
- Bring back the country music festival (1000 visitors for a week!)
- Use Crown land next to school for the community
- Support full operation of Rosewood Club as a central community asset

Map Details:

- Wood Room:** Drawing of a room with a table and chairs.
- Rose Room:** Drawing of a room with a table and chairs.
- Handwritten:** Layla Harris

4. Mapping our community assets

This section maps the community assets that connect us socially and that create networks in our community. It provides:

- A map of our social connectors and assessment of how they impact on the social capital in our local area, and
- An assessment of our social connectors, including our strengths and challenges.

Understanding our community assets that connect us socially, is a foundation of building social cohesion and emergency preparedness and recovery.

What are our social connectors?

Our social connectors in Rosewood and Surrounds have been assessed and mapped overpage and include:

- **Community groups & events** - groups led by volunteers and our community events
- **Services & institutions** - funded services, Council, and other government agencies
- **Places & spaces** - including the parks, sport, spaces, community buildings, cafes, pubs and other places where we meet, attend programs, and connect formally and informally
- **Information sources** - including the local papers, newsletters, and community noticeboards where we receive and share local information.

What is social capital?

Social cohesion is a broad concept that includes the concept of social capital. Social capital refers to the many benefits that arise from having strong social connections and networks within communities.

Social capital has three elements:

“Bonding” social capital characterises social groups where people share many experiences and values associated with their ethnicity, religion or locality and other interests.

“Bridging” social capital focuses on extending interaction between different social groups, which draw people into many different opportunities for pursuing and achieving their aspirations and meeting their needs.

“Linking” social capital connects groups to institutions and organisations that open up opportunities and resolve problems that might otherwise be missed.

Our social connectors

Rosewood is a welcoming and caring community. Residents connect at the Rosewood Golf Club, General Store and Rosewood Public School, and volunteer their time including with the RFS and volunteer-supported Rosewood Golf Club. Local community groups continue to improve the quality and vibrancy of the town and have planted trees, restored the Rosewood Railway Station platform and continue to organise events including the Rosewood Rodeo and Truck Show.

Overall, there are limited places for the Rosewood community to gather and organise community building initiatives in Rosewood, and there is a strong desire for a dedicated community hub and Men’s Shed. There are spaces that can be allocated and better utilised for the community, including Crown Land next to the public school.

Likewise, there are limited services in Rosewood, requiring residents to travel to Tumbarumba or Wagga Wagga for major shopping, retail and services. Council’s Spendmapp data highlights that more than 85 per cent of Rosewood residents spend their money in Tumbarumba.

The Tumbarumba to Rosewood Rail Trail has been a successful pilot project for regional tourism in NSW, and has helped to boost tourism while providing an additional travel corridor for residents between Rosewood and Tumbarumba.

There is one noticeboard located at the Gone Barny Café where the community can access information. We also have Facebook groups where we share information and local news.

A map of the community assets that connect us is provided overpage on pages 14 and 15. This includes how they support the creation and sharing of social capital in our communities.



Rail trail

The rail trail is not only a great place for the Rosewood community to get into the fresh country air, but it’s opened up tourism possibilities for the town.

Assessment by social connector type

Type	Strengths	Challenges
Community groups & events	<ul style="list-style-type: none"> The Rosewood community is active and contributes to town improvements, including the revitalisation of the Rosewood Railway Station platform. The Tumbarumba to Rosewood Rail Trail Committee offer guidance and support to Council. Annual events include the Rosewood Country Round Up Music Festival, Rosewood Rodeo and Rosewood Truck Show and Tractor Pull. These events bring people to the town and add economic value to the area. 	<ul style="list-style-type: none"> The Rail Trail has breathed more life into the town however the town needs an injection of younger residents.
Services & institutions	<ul style="list-style-type: none"> Rosewood Public School is an important social connector serving years K-6. Rosewood RFS Station is the Neighbourhood Safer Place for emergency events. Rosewood Post Office offers services including Bank@Post and National Police Checks. 	<ul style="list-style-type: none"> More services are needed in town, including an operational service station, medical centre, police station, supermarket, dental clinic, and day care centre, amongst other services.
Places & spaces	<ul style="list-style-type: none"> Rosewood Golf Club hosts annual events. The Club was the cornerstone of the community and is no longer in full operation, however there is a strong desire in the community to bring it back to its former glory. The Tumbarumba to Rosewood Rail Trail has been a very successful pilot project for regional tourism in NSW. Besides significantly increasing the tourist and visitor numbers to the area, it has stimulated community initiatives helping to strengthen the community network. Gone Barney Café and Nursery is located at the start of the Rail Trail and is popular with local community members and visitors alike. The Rosewood Rail Trail Café and General Store is also popular with locals and offers bike hire. The Memorial Park playground has been updated with new play equipment, playground fencing and the installation of a shade sail. 	<ul style="list-style-type: none"> There is no Council-managed place for community to come together. The Rosewood Men's Shed has closed and there is community desire for this community asset to reopen. Traffic and speeding creates an unsafe and unpleasant environment, and needs to be calmed. One of the barriers for young people settling in Rosewood is the lack of land available for development. There is no water and sewage system which makes new developments expensive. Bores are also limited per area, which can be a deterrent for new residents to move to the area.
Information sources	<ul style="list-style-type: none"> The community noticeboard at the Gone Barney Café and Nursery provides a central location for community notices. 	

Our social connectors in Rosewood

1

BONDING SOCIAL CAPITAL

“Bonding” social capital characterises social groups where people share many experiences and values associated with their ethnicity, religion or locality and other interests.

Rosewood is a friendly welcoming close-knit community who meet up at the Rosewood Cafe and General Store, with the Golf Club being the main place where the community gets together. The Rosewood Public School, while small, is a place for families and children to bond in town. There is no Council-managed community hall in the area.

2

BRIDGING SOCIAL CAPITAL

“Bridging” social capital focuses on extending interaction between different social groups, which draw people into many different opportunities for pursuing and achieving their aspirations and meeting their needs.

The Rail Trail has brought visitors to Rosewood. Gone Barney Café is the start of the Rail Trail and where visitors from outside the area come to town. People also use the Rail Trail to access other areas nearby and access information at the noticeboard located here. Many young people move on from the town which puts pressure on the long time older volunteers to continue the services they provide to the community. Local events like the Country Music Festival bring people from outside the area into town.

3

LINKING SOCIAL CAPITAL

“Linking” social capital connects groups to institutions and organisations that open up opportunities and resolve problems that might otherwise be missed.

There are no linking services in Rosewood, requiring residents to travel 20km to Tumbarumba and 70km to Tumut. Some residents have started to use the Rail Trail to connect to services in Tumbarumba.

COMMUNITY GROUPS & EVENTS

- Rosewood Country Music Festival

SERVICES & INSTITUTIONS

- Rosewood RFS Station
- Rosewood Post Office

PLACES & SPACES

- Memorial Park
- Rosewood Men's Shed
- Rosewood Rail Trail
- Rosewood Public School
- Gone Barney Café and Nursery
- Rosewood Golf Club
- Rosewood Public School
- Rosewood to Tumbarumba Rail Trail
- Rosewood General Store

INFORMATION SOURCES

- 1 Community Noticeboard (Gone Barney Cafe)



WALK SCORE

Rosewood has a very low Walk Score of 13, indicating that people need to travel by car to access community assets.



Gone Barny
- Nursery, Eucalyptus and Cafe
- Post office

20 Km to
TUMBARUMBA

Cred
CONSULTING

Community asset improvements and projects underway

Ongoing and planned major projects within a village influences the quality of places and its liveability. Recently completed and currently ongoing projects in Rosewood include:

Council led projects:

- Rosewood Beautification and Play Area

Community led projects:

- Improvements to Rosewood Golf Club
- The Tumbarumba to Rosewood Rail Trail, which has been a very successful pilot project for rural tourism in NSW. Besides significantly increasing the tourist and visitor numbers to the area it also created community initiatives which helped to create a community network.

Project:	Grant:
Improvements to Rosewood Golf Club	\$236,266
Rosewood Beautification and Play Area	\$110,000





5. Our roadmap

We attended consultation and came up with the following small, medium and big ideas:

SMALL

Advertise the Men's Shed more (eg BBQ in Tumba)

Stairs for the cubby house

Laser tag!

Climbing equipment

Our park needs a trampoline

Provide family & community infrastructure

Fixing shed - Men's Shed

Manage fishing

Caravan park & camping area

Community garden

Parkour

MEDIUM



Need a coffee shop along the Rail Trail

Need more trees on the Rail Trail to provide shade

High ropes course for rail trail and other tourists

Pump track, BMX track, half pipe next to park

Cattle yards for school

Not enough community activity & sports

Dentist clinic

BIG



Green energy

Develop Crown land next to the school, bike track?

Fuel station in Rosewood

Host Rosewood show

Hospital & defibrillator

Supermarket

Share town news & stories

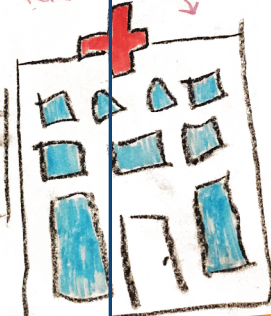
Police station

We want a water park

Movies & arcade

Taya

HOSPITAL FOR EVERYONE



Electrics shops

Daycare

Our Roadmap

Action	Who
Community groups & events	
Local community groups (e.g. Rosewood Golf Club) and local businesses (e.g. cafes) collaborate to identify local events and new groups aimed at activating the town. Identify grant opportunities to enable this.	Community Business Council
Services & Institutions	
Advocate to improve local amenities and services in town including an operational service station, medical centre, police station, supermarket, dental clinic, and day care centre. This could include Council mobile services.	Community Council
Places & Spaces	
Collaborate to provide places for community connection and organising, including: <ul style="list-style-type: none"> • Reopen the Rosewood Men's Shed • Establish a community resilience hub and community gardens • Allocate Crown land next to public space for community use. 	Council Community
Advocate for improved recreational opportunities that appeal to young people and families. Ideas include a BMX pump track, parkour infrastructure, climbing equipment and football pitch.	Council NSW Government
Diversify attractions and offering of recreation activities near to Rail Trail to increase tourism and encourage visitors to linger in town.	Council NSW Government Business
Information sources	
Share town news and stories through a local newsletter, and celebrate our people and place.	Council Community