



Our connected community roadmap

Tumut & Surrounds

Acknowledgement of Country

We acknowledge the traditional custodians of this land and pay respects to Elders past and present.

We recognise Aboriginal people as the original custodians of the lands that comprise the Snowy Valleys Council area and pay our respects to the leaders of the traditional custodians of this land.

Together we acknowledge the contributions of Aboriginal Australians to this country we all live in and share together.

Snowy Valleys Council is committed to enhancing the knowledge and understanding of our communities about the history, heritage and cultures of Aboriginal Australians.



Report title: Tumut and Surrounds - Our Connected Communities Roadmap

Client: Snowy Valleys Council

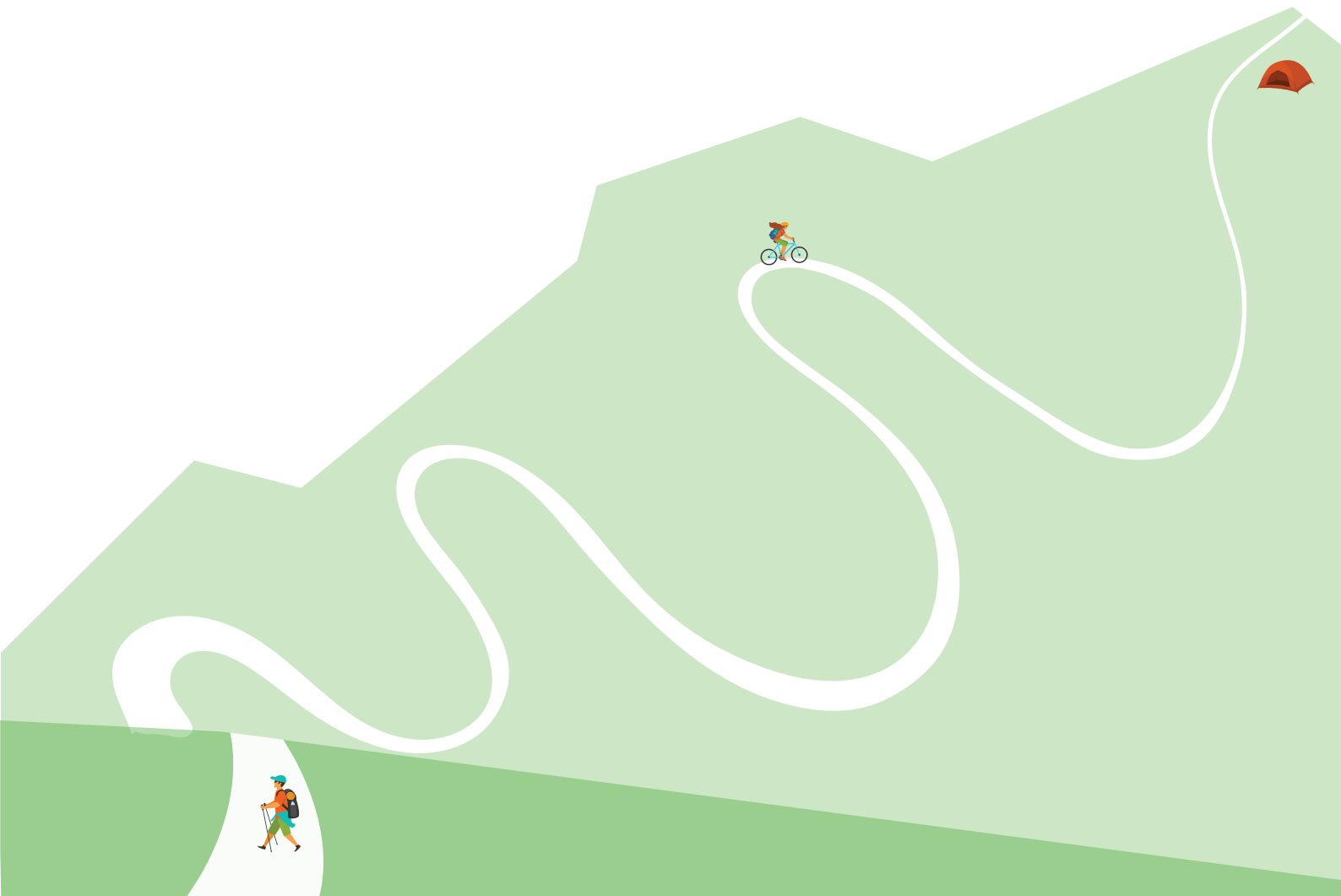
Version: Final

Date: October 2022

This material is made available by Cred Consulting on the understanding that users exercise their own skill and care with respect to its use. Any representation, statement, opinion or advice expressed or implied in this publication is made in good faith. Cred Consulting is not liable to any person or entity taking or not taking action in respect of any representation, statement, opinion or advice referred to in this document.

Table of contents

1. Introduction	4
2. Our Community	7
3. Our Vision and Values	10
4. Mapping our Community Assets	12
5. Our Roadmap	16



1. Introduction

Background

The past few years have been difficult for our community, with the impacts of the 2019-2020 Black Summer Bushfires and COVID-19 lockdowns.

Snowy Valleys Council (Council), through partial funding from the NSW Community Recovery and Resilience Fund, has been working with our local community to prepare community-led plans aimed at understanding our places, spaces and networks that connect us to build stronger more socially cohesive and resilient communities.

Research from Resilient NSW and NCOSS tells us that for communities to be resilient in the face of emergencies, they need to be connected with each other, their places, and local services and institutions. Knowing our neighbours, having good relationships with friends and family, and being part of a connected community means someone will notice if we're missing, help if we are in trouble and get us back on our feet after the crisis has passed.

Building stronger communities

Resilience NSW has identified a number of ways that we can build stronger communities and be prepared for emergencies, respond as a community, and recover together. This includes:

- Understanding our local community including the people and place context - including our history, values and aspirations
- Recognising the complexity of different and unique places, because successful recovery is responsive to the complex and dynamic nature of both emergencies and a community
- Using community-led approaches - being community centred, responsive and flexible, and engaging with communities to move forward
- Coordinating activities - successful recovery requires a planned, coordinated and adaptive approach between community and partner agencies and requires a range of social connectors, and community assets, for this to occur effectively
- Recognising and building capacity - successful recovery is built on effective communication, networking and partnership between communities, services, and government agencies/institutions.

The importance of planning for social cohesion

The Scanlon Foundation (2021) defines social cohesion as being concerned with: "the extent of shared values, mutual respect and acceptance of difference, as well as trust between people and trust in institutions".

Social cohesion is about having strong bonds between individuals and institutions within a society, resulting in positive quality of relationships that are rooted in equal and just treatment, respect and care for one another. Social cohesion is an important foundation for cooperation towards shared outcomes.

Research shows that connected communities, with strong networks, trust, social spaces to connect, and bonds recover more quickly from adversity like the ones we've recently experienced in Tumut and Surrounds.

The Resilient Cities Network's "Measuring Social Cohesion Guide" notes that:

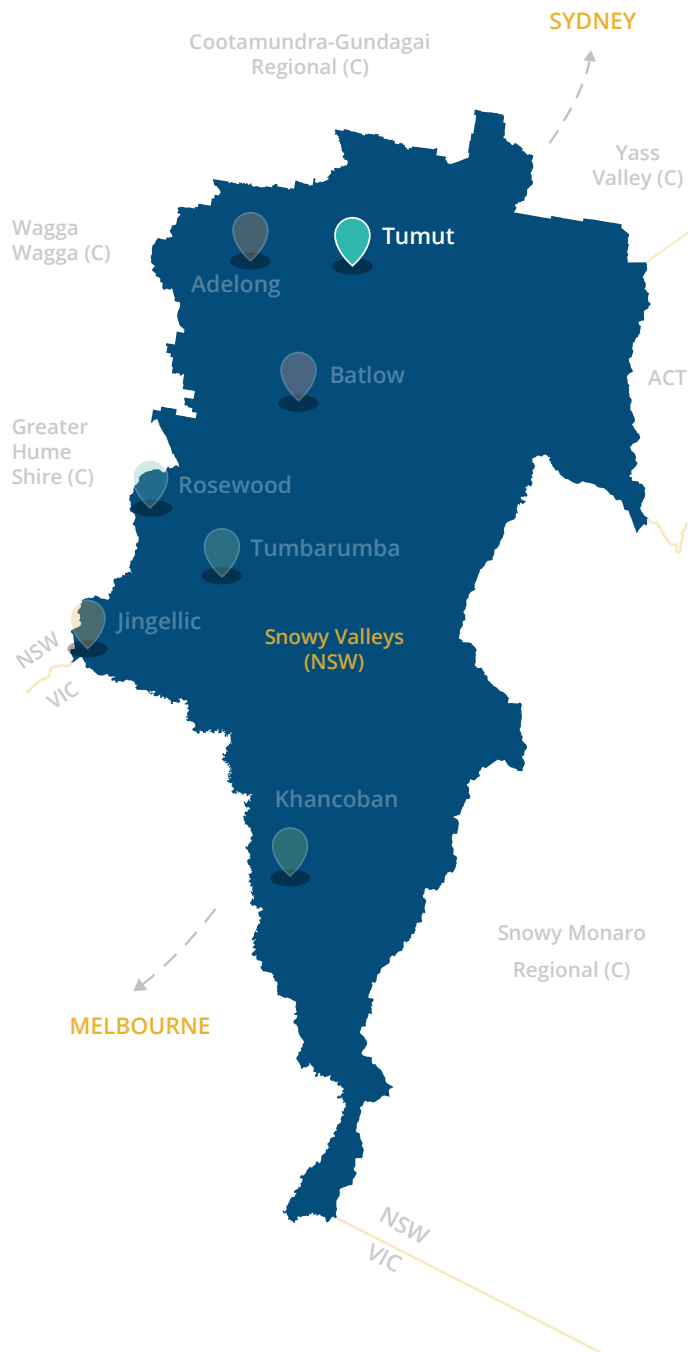
"Higher levels of social cohesion and positive social interactions serve to strengthen the overall fabric of the city, allowing communities to bounce back faster and rebuilt more efficiently after experiencing major shocks and stresses."

Our plan for a connected place

This *Our Connected Communities Roadmap for Tumut and Surrounds* is a community-led plan to build a socially connected, resilient place supported by the community assets needed to plan for, respond to, and recover from emergencies. Tumut and Surrounds includes the localities of Tumut, Brungle, Gocup, Bombowlee, Talbingo, Gilmore, Little River and Brindabella.

This Roadmap sets a vision and values as identified by our local community to strengthen community connections and our resilience locally, and identifies ideas and actions to improve access to the community assets we need to better withstand future challenges and emergency events. It provides our resident and business community, Council and other institutions with the information needed to work in partnership with us.

It acknowledges that our social connectors - the community groups and events; services and institutions; places and spaces; and information sources - play a central role in how socially cohesive we are and focuses on identifying community-led initiatives and priorities for the improvement of our place and community.



Our Community Road Map Locations
(Source: Cred Consulting 2022)

What's in this Roadmap?

This Roadmap includes:

- Our community demographic and place profile
- Our community's vision and values
- What we love and what we'd change about our place
- A map of our community assets, or "social connectors" which bring our community together
- Assessment of our social connectors, our social capital, and identification of strengths and challenges
- Our ideas for how to make our place stronger and more socially connected, and
- An Action Plan for how our community and other institutions can work together to build a strong, socially connected and resilient place.

“

It's so beautiful in Autumn when the trees change colour, and it's close the Snowy Mountains.”

- Community member

How was this developed?

This Roadmap was developed in partnership with the Tumut and Surrounds community and Snowy Valleys Council, acknowledging that the creation of strong socially cohesive communities must be community-led. Our local people and community groups and services have a critical role to play in community building, emergency preparedness and recovery. Engagement with the community included:

- Love Letters to Local Places postcards
- Places We Connect Boards, built by the Batlow Men's Shed
- Pop-up stalls in main streets
- Community meet ups in local community spaces
- Interviews with service providers, businesses, Council, and community groups, and
- Submissions via Council's Have My Say Page.

How can we use this Roadmap?

How can Council use this Roadmap?

Council can use this Roadmap for forward planning and resource allocation for infrastructure, strategic city planning and social development activities within the annual Operational Plan process.

How can Councillors use this Roadmap?

Councillors can use this Roadmap for advocacy, lobbying and promotion of community successes and challenges to government agencies, industry and all levels of government for funding support or program delivery.

How can community members and groups use this Roadmap?

Community members and groups can use this Roadmap for galvanising community group and volunteer action around identified activities for improvement of social cohesion and sourcing grant funding.



2. Our community

Our place

Tumut and Surrounds includes the localities of Tumut, Brungle, Gocup, Bombowlee, Talbingo, Gilmore, Little River and Brindabella. Tumut is our largest centre in the Snowy Valleys and is where most of our residents live. We are located in the north of the LGA, around 400km from Sydney and 105km to Wagga Wagga.

Tumut is a vibrant country town situated at the foothills of the Snowy Mountains. Tumut's name originates from a First Nations word meaning 'a quiet resting place by the river'. It is a charming and pretty town that changes dramatically with the seasons.

The rolling valleys, mountain streams, Yarrangobilly Caves and alpine mountain ranges make it popular for nature lovers and adventure enthusiasts. There are many activities to do here, including bushwalking, water-skiing, trout fishing, canoeing, boating, horse riding, mountain biking, golf and tennis.

Talbingo sits below Big Talbingo Mountain. With a northerly aspect, arrivals from the north are greeted by a near-perfect inverted image of Talbingo on the surface of Jounama Pondage.

Brungle is a small village situated 20kms north of Tumut. Rolling farmlands and hills are interrupted by the Tumut River with the village situated just a short distance from its banks. It has a relaxed rural lifestyle, with many great fishing and camping spots. The area is a significant place for the local First Nations community, with one of the first Aboriginal Reserves in NSW established in the village in 1887.

The community assets and those social connectors that make our place special are detailed in Section 4, Mapping our Community Assets.



Valued assets

A range of facilities that support the whole community like the bowls club, skate park, Tumut Museum and Montreal Theatre.



Experiences with nature

Beautiful environment and climate that enables nature-based health and recreation including the old-fashioned caravan park.



Great open spaces

Enjoy being close to beautiful parks and open spaces to walk dogs and spend time with family and friends.



Our people

In 2021, there were around 7,278 people living in Tumut and Surrounds, making us the most populated area in the Snowy Valleys LGA.

People of all ages live in Tumut and Surrounds.

We have a range of facilities and services in Tumut meaning that we can cater to the needs of people of all ages. Accordingly, we have a similar proportion of people under the age of 18, 18 to 64, and over the age of 65 compared to the average across our LGA and Regional NSW.

Our residents are most likely to own their homes and live in family households.

More than half our households are families, with a quarter of our population living alone. While the number of people renting is similar, a higher proportion of people in Tumut and Surrounds are homeowners (53%) compared to Snowy Valley (39%) and Regional NSW (36%).

We are a diverse community and celebrate our First Nations peoples.

Our town is located on the traditional lands of the Wiradjuri People. More than 5% of our residents are First Nations people, which is higher than the average across our LGA. One in seven residents (or 13%) speak a language other



Friendly community

There's a lovely small community feel that is supported by friendly people, active community groups and local events.

than English at home, which is much higher than the average of our LGA (3.5%). This is because we are home to many itinerant workers.

Fewer people volunteer in comparison to other places in the Snowy Valleys.

Compared to other localities in our LGA, including Rosewood and Jingellic, less people volunteer their time in Tumbarumba and Surrounds.

Table 1 - Our people and households characteristics
(Based on 2021 ABS Census for the areas of Tumut, Brungle, Gocup, Bombowlee, Talbingo, Gilmore, Little River and Brindabella.)

	Tumut & Surrounds	Snowy Valley Council	Regional NSW
Total population	7,278	14,891	-
Median age	43	45	43
Median household income	\$1,073	\$1,122	\$1,166
Under 18	22%	22%	22%
18-64	54%	56%	57%
65+	22%	22%	21%
Language other than English	13.2%	3.5%	5.7%
First Nations	5.2%	4.4%	5.5%
Renting	22%	19%	22%
Homeowners	53%	39%	36%
Lone households	24%	27%	26%
Family households	52%	62%	63%
Volunteering	18%	25%	21%
No internet access	21%	34%	27%
SEIFA	934	951	971

Please note: The ABS provide estimates for localities with small populations for privacy purposes, and therefore not all percentages will add up to 100%.

3. Our Vision and Values

Our place vision

The community want to see sustainable growth for Tumut, where industry, jobs and housing opportunities are expanded so that the town continues to thrive. Transport connections also need to be improved, so young people stay in Tumut. It is important to preserve the country feel and welcoming culture of the place.

The Tumut community are proud of their town and want to see public spaces that are leafy and well maintained with additional amenities for young people and older people.

Preservation of cultural and historical elements in Tumut is important to the community, including the Tumut Museum and Montreal Theatre, as well as improved visibility of the local Tumut First Nations community culture, heritage and connection to Country.

Our values

The Tumut & Surrounds community shared what they value about their place and what makes it special:

Supportive community

- Country living
- Welcoming culture
- Social community
- Volunteering culture

Nature and open space

- Wildlife
- Trees and parks
- Outdoor recreation
- Peaceful place
- Significant to First Nations peoples

Being active

- Sport
- Outdoor recreation
- Watersports

Connected

- Connections to Wagga Wagga
- Connections to family, community and each other
- Social connections
- Connection with nature

Water

- River is a gathering ground for people to catch up, socialise and exercise
- River walk
- Watersports such as fishing and camping
- Dams

Future generations

- Our children
- Teaching and growing
- Caring for Country
- Caring for our future



I love the small community feel of Tumut, its still a country town but it has all the services you need."

- Community member

Good services

Access to all the services needed including the hospital, whilst still a country town that feels alive and allows for a good way of life.



What you told us Tumut and surrounds

LOVE

All the nature,
water, fishing
& recreation

Dogs & walking
dogs in all the
great open
spaces

Sports &
sports groups

Really friendly
community

Heritage
buildings like
the Montreal
theatre

Coode Cottage,
Tumut Men's
shed & other
community
groups

Love the way of
life, not rushed

Not a dying
town, not
'booming' but
still feels alive

Love the small
community feel

Duck park.
Love the river
walk & meeting
friends

Still a country
town - has all
the services I
need

Beautiful trees.
Beautiful parks

Love the
caravan park
the way it is -
old-fashioned

Location is
great - close
to leisure &
nature

Exploring &
hiking with
family. Close to
Snowy walks

Little festivals
(brewery needs
a gold medal
- they make it
happen!)

Bowls club,
coffee shops

Tumut Museum
- protect it

The skatepark

Beautiful
climate.
Autumn trees
change colour

Red cross
hospital

CHANGE

Support
tourism and
educate local
business to
cater better

Attract more
industry
(less primary).
Support for
small businesses

Bus transport
services needed
to Wagga. Bring
back community
transport trips

Bike paths
along highway
toward
Blowering

Maintain
streetscape -
trees, parks &
paving

Toilets needed
at duck park.
Improve
Richmond Park
toilets

Remove
power towers,
put them
underground

Men's shed
should be more
accepting of
women

Heavy traffic
destroys the
roads (trucks
along highway)

Improve Council
communication
(closed paths
since fires,
radio channels)

Improve Council
planning &
reporting -
long-term,
costing, grants

Asset
management
should get
returns on
council rates

Town runs on
community action,
Council should
communicate
better with them

Housing prices
are going up
because the
community is
growing

Not enough
housing. It's
a challenge
(both rental &
ownership)

Don't want the
area to change.
No housing
development on
Bush Common

Diverse food
& retail
opportunities -
how can these
be supported?

Better caravan,
long vehical &
truck access/
parking

Need more
support for
younger ones
who bring new
ideas & business

Some roads need
fixing & tidying
up. Speed limits
should be slower
in the centre

Aboriginal
heritage &
connections
highlighted
& celebrated



4. Mapping our community assets

This section maps the community assets that connect us socially and that create networks in our community. It provides:

- A map of our social connectors and assessment of how they impact on the social capital in our local area, and
- An assessment of our social connectors, including our strengths and challenges.

Understanding our community assets that connect us socially, is a foundation of building social cohesion and emergency preparedness and recovery.

What are our social connectors?

Our social connectors in Tumut and Surrounds have been assessed and mapped overpage and include:

- **Community groups & Events** - groups led by volunteers and our community events
- **Services & Institutions** - funded services, Council, and other government agencies
- **Places & spaces** - including the parks, sport, spaces, community buildings, cafes, pubs and other places where we meet, attend programs, and connect formally and informally
- **Information sources** - including the local papers, newsletters, and community noticeboards where we receive and share local information.

What is social capital?

Social cohesion is a broad concept that includes the concept of social capital. Social capital refers to the many benefits that arise from having strong social connections and networks within communities.

Social capital has three elements:

“Bonding” social capital characterises social groups where people share many experiences and values associated with their ethnicity, religion or locality and other interests.

“Bridging” social capital focuses on extending interaction between different social groups, which draw people into many different opportunities for pursuing and achieving their aspirations and meeting their needs.

“Linking” social capital connects groups to institutions and organisations that open up opportunities and resolve problems that might otherwise be missed.

Our social connectors

There are many cafes, smaller retail shops and pubs for the community to connect in Tumut’s town centre. The town is also well serviced with community and government services, education, entertainment and green spaces. There are a range of recreation spaces, including the skate park, pump track, river and sports facilities. Nonetheless, some residents prefer to travel to Wagga Wagga to access major services and for a day out shopping or to go to the cinema. Some community assets, such as the Montreal Theatre are underutilised and an opportunity exists to further activate the town centre.

Council’s Spendmapp data indicates that many people travel from other areas of the LGA to Tumut for shopping, dining and retail needs. This signifies that Tumut is the go to town for many people living in the Snowy Valleys LGA, and that the town offers a diverse range of staying places for its communities. For example, residents in Brungle and Talbingo have limited access to local services and rely on travel to other places such as Tumut.

There are a number of events that celebrate local characteristics and draw visitors to the area. The Falling Leaf Festival celebrates the spectacular seasonal delights of the area through music, markets and food and is held in April each year. Meanwhile, the Tumut Rodeo thrills the crowds with bucking bulls and award-winning saddle broncs.

Tumut is well resourced with information sources, including the local community radio station and newspaper.

Community events

Little community-run festivals and events that make Tumut an attractive place to live and visit.



Assessment by social connector type

Type	Strengths	Challenges
Community groups & Events	<ul style="list-style-type: none"> There are many community groups and organisation, including the Tumut Art Society, Gilmore Progress Association and Tumut Equestrian Group. Falling Leaf Festival is a large annual festival held in April to celebrates local music, food and crafts. The Tumut Rodeo is also a popular event with the local community. 	<ul style="list-style-type: none"> Visibility of First Nations cultures and heritage can be improved by highlighting important links and history on Country. Community groups can be enhanced through increasing participation by looking to more diverse groups for members.
Services & Institutions	<ul style="list-style-type: none"> Tumut is the main service centre for the Snowy Valleys LGA , and the community has access to a range of community and government services. There are range of educational facilities, including schools, library and TAFE, which draw young people to the area. Coo-ee Cottage is a central bonding and support space for the First Nations community. There is a good offering of accommodation for visitors to stay in town. 	<ul style="list-style-type: none"> Attracting new ideas and diverse enterprise and educate local businesses to better cater for tourists and locals. Cycling and public/community transport routes can be improved, as well as reopening and maintaining blocked roads to increase connectivity. More affordable housing options to support a growing community, while also managing development and change.
Places & Spaces	<ul style="list-style-type: none"> There are many recreation spaces, including the skate park and pump track, river and sports facilities. Other places for the community to connect includes cafes, breweries, pubs, a free swimming pool, breweries and theatre. 	<ul style="list-style-type: none"> Ensuring upkeep of streets and public spaces, including trees, paving and parks. Ensuring toilet facilities are appropriately located and maintained to service the local community and visitors. Heavy traffic destroys the road along the highway and various roads require speed signage, fixing and tidying to remove litter. Underutilisation and coordination of the use of the Montreal Theatre.
Information sources	<ul style="list-style-type: none"> Sounds of the Mountain (FM 96.3) is a local community radio station that operates 24/7 and is staffed by paid and volunteer locals. The Tumut and Adelong Times provides local news, information and engagement opportunities. 	<ul style="list-style-type: none"> There is a need to develop better communications channels between Council and community, as well as to improve understanding of reporting, costings and grants.

Our social connectors in Tumut

1

BONDING SOCIAL CAPITAL

“Bonding” social capital characterises social groups where people share many experiences and values associated with their ethnicity, religion or locality and other interests.

Tumut is a vibrant town with many places to meet, walk the dog, play with kids, play sport, and meet up at the cafes, pubs, the free swimming pool, breweries and theatre. Cooee Cottage is a central bonding space for the First Nations community. There are many recreation spaces to bond, including the skate park, river and sports facilities.

2

BRIDGING SOCIAL CAPITAL

“Bridging” social capital focuses on extending interaction between different social groups, which draw people into many different opportunities for pursuing and achieving their aspirations and meeting their needs.

The area has many visitors and seasonal workers, which brings a diverse range of people to town. People visit on their way to Canberra and the Snowy Mountains, and there is accommodation for people to stay here. There are educational facilities, including libraries, schools and TAFE, which draws young people to the area.

3

LINKING SOCIAL CAPITAL

“Linking” social capital connects groups to institutions and organisations that open up opportunities and resolve problems that might otherwise be missed.

As the main service centre for the Snowy Valleys LGA, the area has the linking institutions residents need to access all services. Social services are delivered externally by Valmar.



WALK SCORE

Tumut has a high Walk Score of 72 which means that people can access community asset including services easily in town and close to home

COMMUNITY GROUPS

- Tumut Show
- Tumut Basketball Association
- Women’s Group
- Brungle and Tumut Indigenous Group
- Gilmore Progress Association
- Talbingo Community Association
- Talbingo Mountain Biking Group
- Tumut Classic Bike event
- Tumut Equestrian Group
- Tumut Art Society
- Tumut Bushwalking, Canoe Club, Mountain Bike Clubs
- Tumut Historical Society

SERVICES AND INSTITUTIONS

- Valmar Support Services
- Tumut and District Neighbourhood Centre
- Cooee Cottage
- Snowy Valleys Council
- NSW Rural Fire Service
- Tumut Regional Family Services
- Brungle – Tumut Aboriginal Land Council
- IDEAS
- Australia Post
- Tumut Police Station

PLACES AND SPACES

- | | |
|--|--|
| • Wynyard Street cafes, shops and pubs | • Tumut Sportsgrounds (RFS Safe Space) |
| • Tumut Library | • Tumut Bowls Club |
| • Tumut Showgrounds | • Brungle Primary School |
| • Cooee Cottage | • Tumut Public School |
| • Montreal Community Theatre | • Tumut High School |
| • Tumut Basketball Stadium | • Franklin Public School Tumut |
| • Tumut Caravan Park | • Tumut River |
| • Tumut Mountain Bike Park | • Rotary Gardens |
| • Tumut Turf Club | • Breweries (like Tumut River Brewing Company) |
| • Tumut Visitor Centre | • Tumut TAFE |
| • Tumut Swimming Pool | |
| • Tumut Skate Park | |
| • Lacmalac Hall (RFS Safe Space) | |

INFORMATION SOURCES

- Tumut and Adelong Times
- Sounds of the Mountain, Tumut 94.3 Radio
- 2 Community Noticeboards (Library & Main Street near Pie in the Sky bakery)



Community asset improvements and projects underway

Ongoing and planned major projects within a town influences the quality of places and its liveability. Recently completed and currently ongoing projects in Tumut and Surrounds include:

Council led projects:

- Brungle Picnic Tables and Seating
- Brungle Wi-Fi Upgrade
- Tumut Bull Paddock Surface Upgrade
- Improved Recreational Facilities - Bull Paddock
- Tumut CBD Development Accessibility and Amenity
- Tumut Pool - Stage 1
- Tumut Pump Track and Cycling Initiatives
- Tumut Wi-Fi Upgrades
- Regulate Water Temperature of Tumut Pool
- Tumut Skate Park Redevelopment

Community led projects:

- Tumut Montreal Theatre Upgrade
- Tumut Jack Ryan Memorial and Centenary of WW1 Project
- Gilmore Hall Repairs and Renovations
- Thomas Boyd Track Head Facility Upgrade
- Tumut Rugby League Changeroom Twickenham Oval
- Tumut Tennis Courts Resurfacing

Currently ongoing:

- Tumut Fitzroy Park Amenities
- Tumut Pioneer Park Upgrades
- Tumut Aerodrome Upgrade Stage 1
- Tumut Aerodrome Upgrade Stage 2
- Tumut Emergency Evacuation and Multipurpose Centre
- Tumut Pool Upgrade Stage2

Project:	Grant:
Rebuild of infrastructure damaged during the Black Summer Bush Fires	\$89,000 (Federal Government Black Summer Bushfire Recovery Grant)

Non-Council projects

- Talbingo Dam Improvements (Boat Ramp/ Recreation Area)





5. Our roadmap

We attended consultation and came up with the following small, medium and big ideas:

SMALL

Connect local groups together like Cooebee Cottage & the Men's Shed

Charge for pools (adults)

Need better internet connectivity

Keep shops open later on Saturday afternoons

Need more cafés

Not everyone uses internet. Need a notice board to inform people

Monthly email from Council to residents

Too much speeding along Tumut street Adelong JO Zone need speed signs

Build more family-friendly bush/wildlife walks in the area

More parking for boats & caravans outside shops

Improve upkeep of Rotary Pioneer Park

MEDIUM

New public toilets in Brungle

Support for grant writing to build ongoing management

Install a roller rink in the old basketball hall (once the Emergency Centre is built)

Improved & regular health services for Brungle

Permanent Kiosk for Council contact or rent out for community groups

IT learning sessions. Internet café & go-to point for IT support

Open pool all year round

Fenced in recreation/picnic for families incl. BBQ, toilets

Rail trail from Tumut to Batlow

Do up the old Council chambers. Use as offices or for community space

More sporting areas

Petting zoo for kids

All-ability activities for people

Need a place for older & younger kids to be together

BIG

Better located & well-known Visitors Centre

Knock down boys club hall & put a new basketball stadium there

Brindabella road upgrade ASAP!

Embed Aboriginal culture into the landscape

Address housing issues

More land for more houses

would love a PCYC

Build an indoor recreation centre for families.

Reopen Yellaween Road for local industry, tourism & residents

Create walk/cycle access to Power Station, Jounama Creek & Buddong Falls

Our Roadmap

Action	Who
Community Groups & Events	
Improve local skills to access and write successful grants.	Community Council
Services & Institutions	
Collaborate around use of the old Council Chambers for community uses.	Community Council
Advocate for improved and more regular health services to Brungle and improved public toilets in Brungle.	Council
Places & Spaces	
Investigate opportunities for more more events, programs and spaces that promote First Nations cultures into the area.	Cooe-ee Cottage Brungle Primary School Council
Activate the town centre and extend retail/cafe opening hours to create social opportunities at night and to attract visitors to stay in town.	Community Business
Improve maintenance of public places, including Rotary Pioneer Park.	Rotary Council
Provide more space for community sports.	Council NSW Government
Advocate for a Rail Trail to connect from Tumut to Batlow	Council Community
Information Sources	
Improved communications and informations about community programs, events and groups	Council

